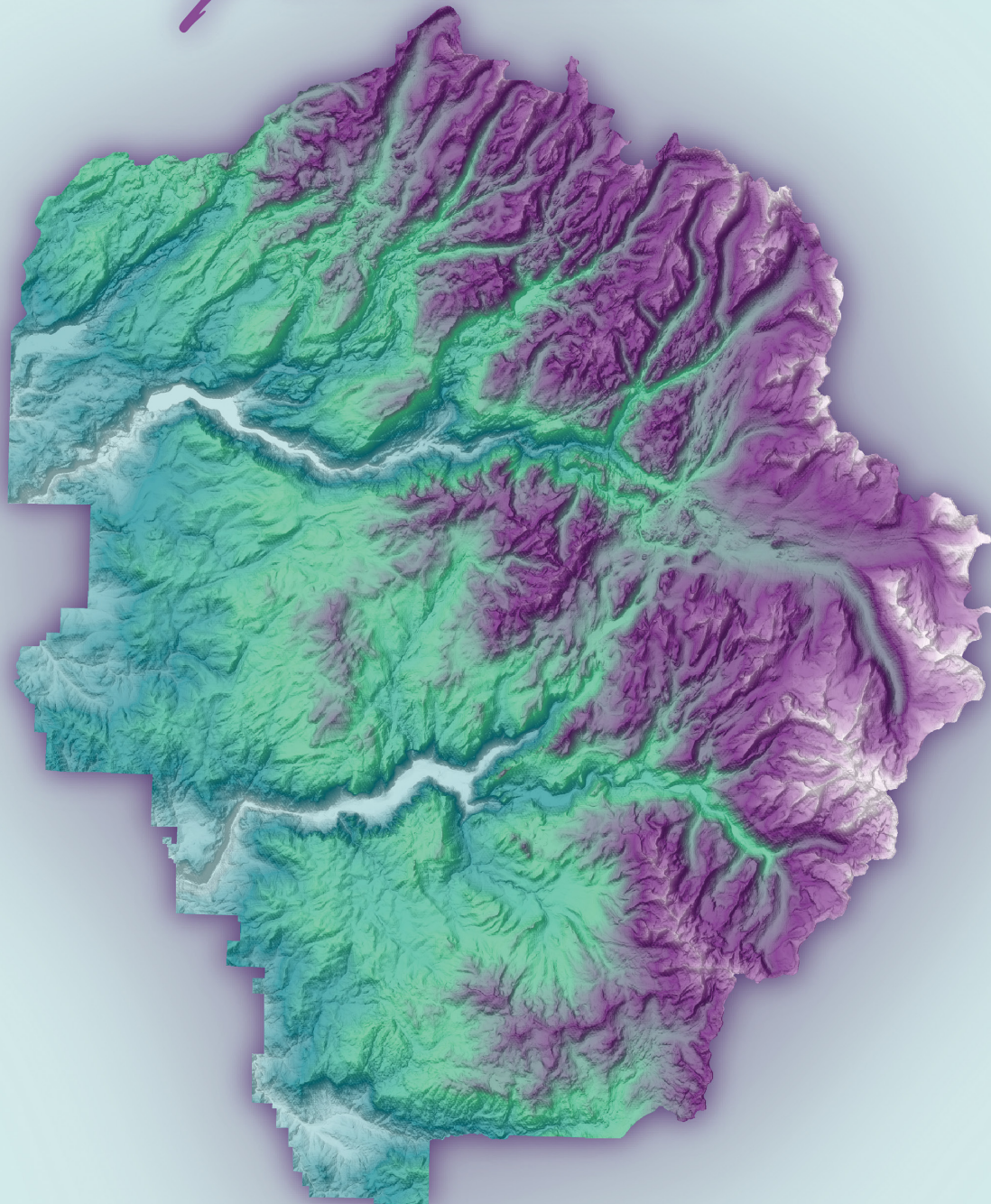


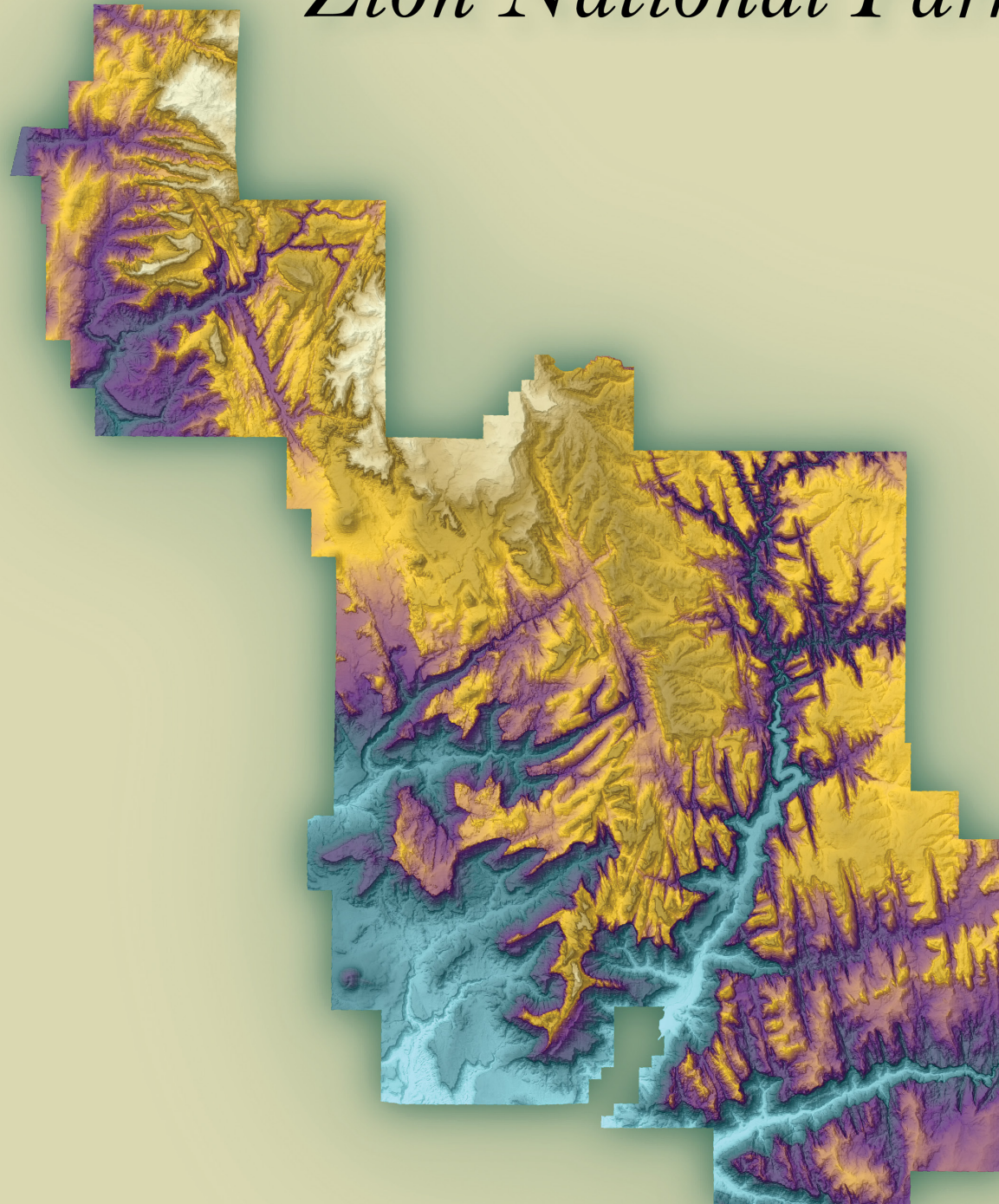
Sean Fleming is a graduate student at Humboldt State University in Natural Resource Science with a focus in Environmental Science and Management. Geospatial science and remote sensing are the main focuses of his research. Sean is a Geospatial Analyst/Research Assistant with the U.S. Forest Service through Humboldt State University's Sponsored Programs Foundation. He has done a majority of his research on watershed and riparian habitat modeling, fire emission modeling, alpine and arctic remote sensing, augmented reality in GIS, and political mapping with volunteered geographic information.

# SEAN FLEMMING

## *Yosemite*



## *Zion National Park*



This map displays exciting color gradients representing the variation of the elevation in both Yosemite and Zion National Parks. It was created utilizing United States Geological Survey (USGS) National Map 3DEP 1/3rd arc-second Digital Elevation Models and Adobe Photoshop.