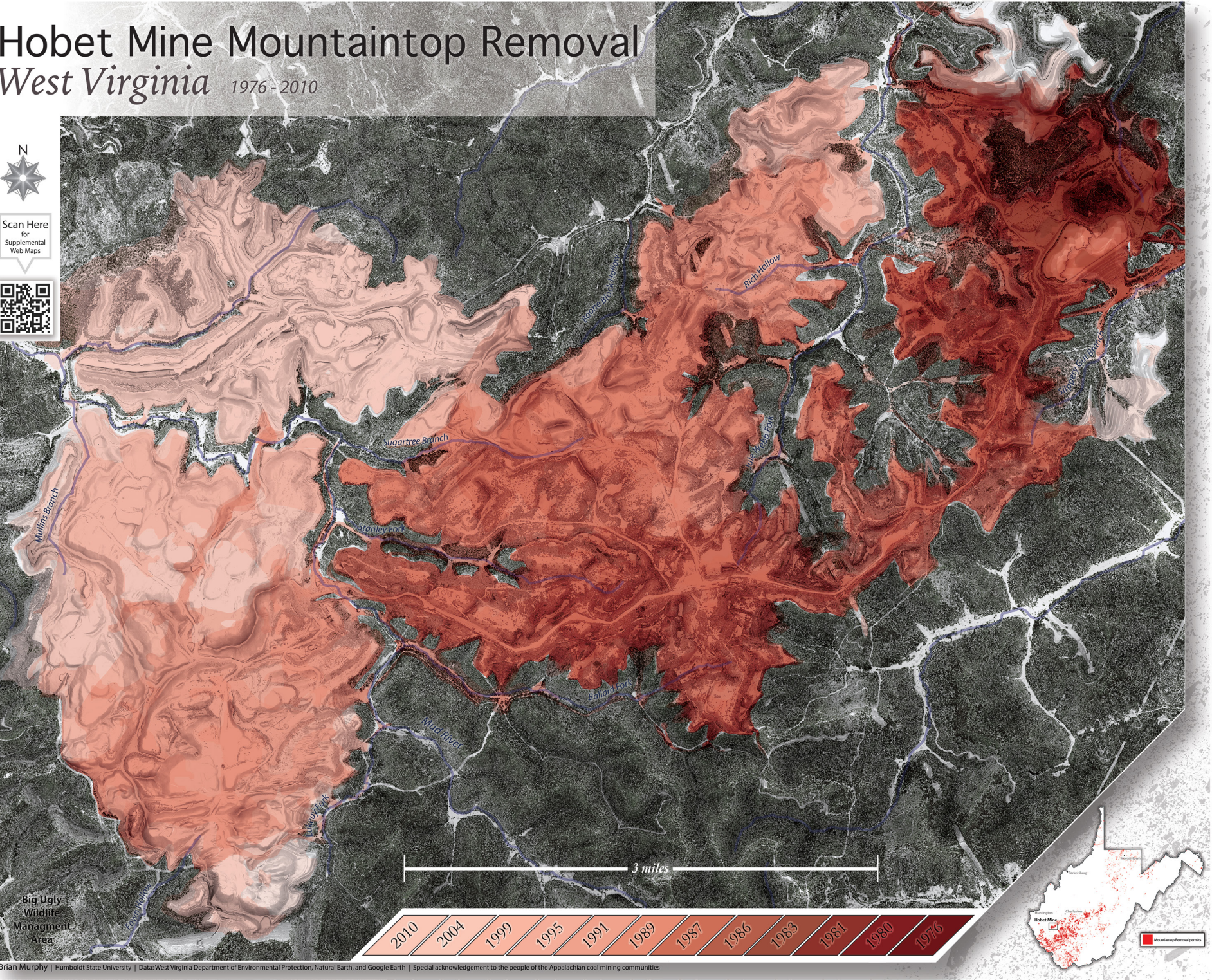


Brian Murphy is currently an undergraduate at Humboldt State University (HSU) majoring in Environmental Science and Management with a concentration in Geospatial Science, and minoring in Geography. Brian is currently working as an Instructional Student Assistant for the geospatial curriculum, and as a watershed web map developer. He also serves as the President of the HSU Cartography Club. Brian's research interests and experience include blending remote sensing data with cartography, generating 3D terrain models using CAD software, and investigating the role of maps as a tool for igniting public discourse.

BRIAN MURPHY

Hobet Mine Mountaintop Removal West Virginia 1976-2010



The Hobet Coal Mine is located in West Virginia, and was an active mining site for 41 years. At the time, it was one of the largest surface coal mines in the United States. The impacts of this particular mine are especially pronounced because of the sheer scale of alteration to the landscape caused by removing the peaks of mountains to retrieve the coal. The once verdant and biodiverse mountains have been obliterated, and when the coal is removed, the remaining earth is filled into nearby valleys, creating a flat plateau. This terrain has been destroyed, poisoned, and exploited by human greed. This map aims to visualize this conflict between human and nature by showing the progression of this mine over its lifetime.