

Humboldt State University

Digital Commons @ Humboldt State University

Newsletters

University Archives

10-8-2019

CTL Newsletter

Center for Teaching & Learning

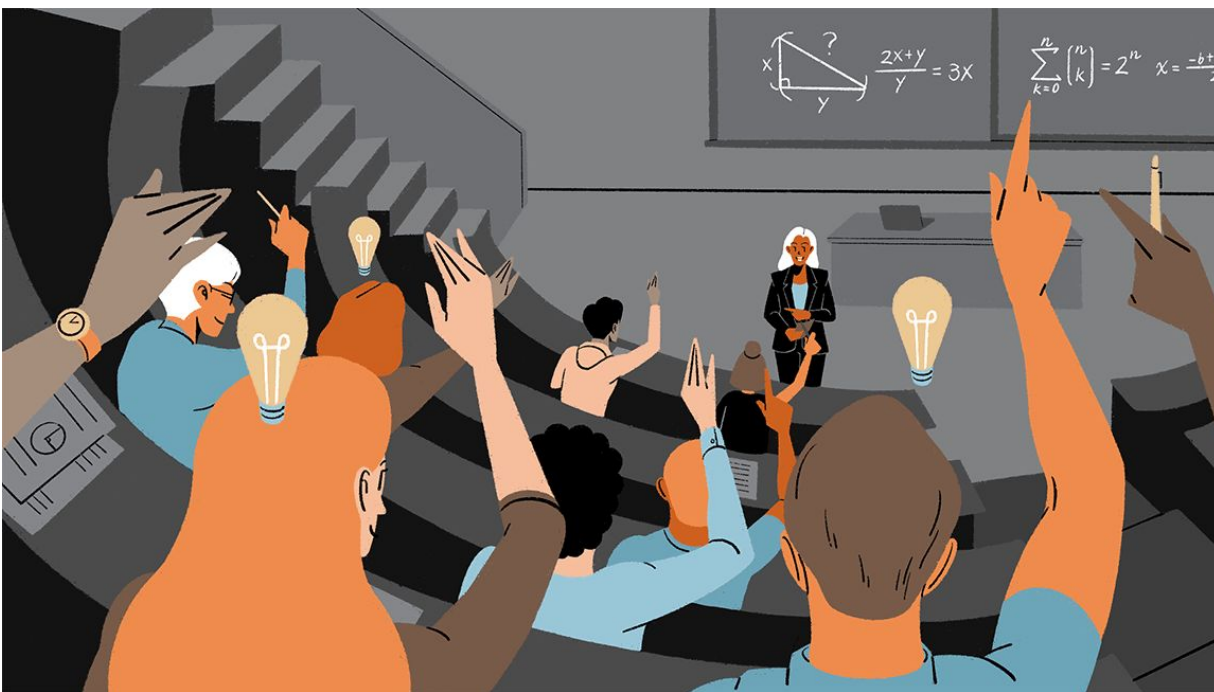
Follow this and additional works at: https://digitalcommons.humboldt.edu/campus_pub



Center For Teaching & Learning Weekly Newsletter

INSPIRE. INNOVATE. IMPACT.

Get Ready for the Course Design Institute!



by Terri Georgopoulos, Instructional Designer

The [Course Design Institute](#) (CDI) is an annual program that supports instructors in re-imagining teaching and students' learning through evidence-based pedagogy and the opportunity to work with colleagues to design student learning experiences. As a partner, the CTL provides a structure, resources, frameworks, the latest research on teaching and learning effectiveness, as well as opportunities for sharing and furthering this work.

The 2019/20 CDI on *Re-imagining the Learning Experience* is a two-part series. Part one examines the fundamental structures of our courses. In doing so, we uncover the course's big ideas and essential questions, explicate the thinking goals we have for our students, and develop a design plan. Part two we develop learning experiences, crafting assignment criteria and rubrics, and embedding meaningful assessments to gauge student learning. Participants across all teaching modalities (face-to-face, online, blended) are invited to join. Please contact the CTL with any questions.

Call for Participants: Register Now!

UPCOMING OPPORTUNITIES



What Training and Professional Development Do You Need?

We are conducting a survey to determine the training and professional development needs for all HSU staff, faculty and administration. All HSU employees are invited to participate.

The survey is being conducted by HSU Human Resources Department (HR), in collaboration with the Center for Teaching and Learning (CTL), the Library, ITS, the Office of Diversity, Equity and Inclusion, and other University departments. Should you have any questions about this survey, please contact Nancy Olson at no43@humboldt.edu or 707-826-5154.

SCHOLARSHIP & CONVERSATIONS



[Hartford Courant: How Trinity College is creating an inclusive future](#)

We dedicate millions of dollars to financial aid to recruit an increasingly talented and diverse student population. We tell prospective students that we value their ability far more than their ability to pay. But when they get here, are we doing enough to create an educational environment that meets their needs, that's truly inclusive?



Ally Workshops

Want to know more about those red, orange, and green gauges in Canvas and what to do about them? Join us for a hands-on workshop to [learn more about and work with the Ally tool!](#)

We are offering the following workshop sessions in October to faculty and staff:

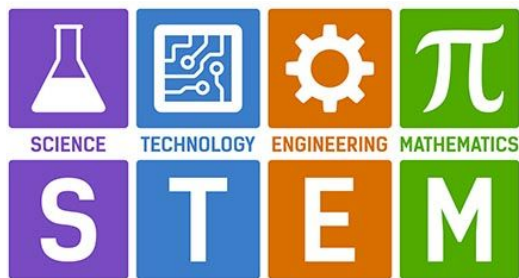
- Friday, October 11, 2019, 3-4pm
- Monday, October 21, 2019, 9-10am
- Thursday, October 24, 2019, 12-1pm

[Sign Up Form: Ally Workshop](#) Fall 2019

AAC&U Webinar: Strategies for Supporting Faculty Planning to Advance Curricular Coherence: Four Case Studies

[Webinar Recording & Slideshow Found Here](#)

When intentionally designed by faculty, curricular pathways can guide students to higher levels of learning, intellectual skill development, and practical knowledge. This webinar will feature the ambitious curricular change efforts currently underway to increase intentionality and reduce time to degree at the four institutions participating in AAC&U's Purposeful Pathways: Faculty Planning for Curricular Coherence project (Community College of Philadelphia; University of Houston-Downtown; University of Nevada, Las Vegas; and Winston-Salem State University). This effort is funded by the Teagle Foundation.



[Inside Higher Ed: The Myth of the STEM Pipeline](#)

The STEM pipeline is a commonly employed, even overused, metaphor describing the path to careers in science, technology, engineering and math. But the concept of a rigid career pipeline sends the wrong message. The term has codified a narrow educational path that begins as early as preschool and continues through college and career.

***I worry that young people are deciding too early to forgo a STEM career if they don't have the "right profile."* - Wendy L. Hill**



[Center for Teaching & Learning: Consultations](#)

The CTL offers a variety of consultation services to support faculty in the classroom. Send us an email at ctl@humboldt.edu and/or drop by the CTL Office, Library 315.

Individual consultation - partnering with pedagogy experts, learning experts, instructional designers, technology experts, and others

Observation of Instruction - have a CTL staff member observe your classroom, or observe a peer's classroom (peer observation coming soon!)

