

Humboldt State University

Digital Commons @ Humboldt State University

Ina and Noel Harris Collection

Special Collections

9-2-1938

California Recruiter - September 1938

California Recruiter

Follow this and additional works at: https://digitalcommons.humboldt.edu/harris_collection



Part of the [Arts and Humanities Commons](#), [Civic and Community Engagement Commons](#), [Community-Based Learning Commons](#), [Legal Studies Commons](#), [Public Affairs](#), [Public Policy and Public Administration Commons](#), [Social Justice Commons](#), and the [Social Work Commons](#)

Recommended Citation

California Recruiter, "California Recruiter - September 1938" (1938). *Ina and Noel Harris Collection*. 14. https://digitalcommons.humboldt.edu/harris_collection/14

This Article is brought to you for free and open access by the Special Collections at Digital Commons @ Humboldt State University. It has been accepted for inclusion in Ina and Noel Harris Collection by an authorized administrator of Digital Commons @ Humboldt State University. For more information, please contact kyle.morgan@humboldt.edu.

**4000
New
Members**

CALIFORNIA **RECRUITER**

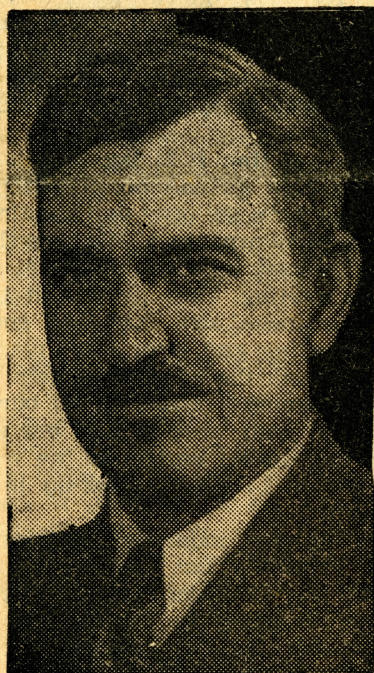
**From
July 7 to
Nov. 7**

Foster Calls for Mass Party In California

10,000 Communists by End of Year

Greetings:

On the occasion of our visit to California we want to express a few thoughts to the members of the Party. Comrade Browder and myself



EARL BROWDER, *General Secretary*

have spoken at four fine meetings with an attendance of 18,000 people. These meetings were a splendid example of the growing influence of our Party and its ability to rally numbers far beyond its own strength. This is a healthy indication. This is as it should be.

We have watched with keen interest the rapidly rising progressive movement and its constantly growing determination to bring the New Deal to California—into the State Capitol, into every City Hall. We are quite confident that this movement with your untiring help will become even

stronger and more powerful in the coming months and will record a new glorious page in the history of your state by overwhelmingly defeating the anti-New Deal administration of Merriam.

We have seen the growing solidarity and consciousness of the labor movement in your state which has, despite the concerted open-shop drive, succeeded in strengthening its ranks and maintaining the conditions won in many a bitter battle. We are also confident that with thousands of Communists in both CIO and AFL unions we will exert all our energies to bring about political unity of labor in the final elections around the New Deal slate and succeed in driving back the present vicious open-shop offensive.

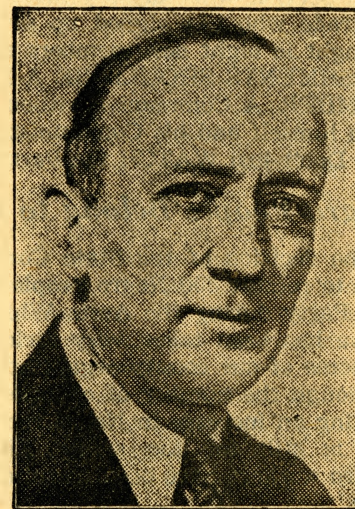
In all the manifold activities in which our Party in California is actively participating, we have noted a steady growth of the Party, both numerically and in influence. We are proud of the growth of our Party in California and the fact that it has thus far maintained its position as the second largest district in the country in face of the vigorous socialist competition of the Illinois district.

Having seen your work and having seen your great possibilities—we are more convinced than ever that the Party in California has the most favorable conditions for rapid growth. In fact, this growth is essential for the further development of the labor-progressive camp in the state.

It is in this light that we urge you to tackle your Anita Whitney Party Building Drive for 4,000 new members to build our Party in California to 10,000 strong. Ten thousand Communists will immeasurably extend

the work of our Party and gain greater prestige among the progressive moving forces in the state. The maximum attention and energy of every Party member must be centered on achieving this objective and make Party building an inseparable and key task in building the democratic front.

The building of the Party is the task of every Communist. You know many honest and militant people in the neighborhoods, in your unions, in your organizations, in your shops. Bring them into the Party. They belong together with you in our midst—thus strengthening your own work—



WM. Z. FOSTER, *National Chairman*

their work—and our collective efforts as a whole to defeat reaction.

Become an active Party Builder. Forward to 10,000 Communists in California!

Comradely yours,
WILLIAM Z. FOSTER,
National Chairman,
Communist Party,
U.S.A.

Forward to the Party Builders Congress!

Communists, stop what you are doing for a few minutes. You who are writing leaflets, distributing literature, collecting dues, building LNPL clubs—look around you and see what the whole Party is doing to recruit 4,000 new members by November 7th.

Start Recruiting Now

Somebody recruited every member in our Party. People seldom come in by themselves. Someone answered their questions, overcame their prejudices, explained away their last objection, and signed them up. If you haven't recruited anyone yet, then you haven't experienced that supreme thrill. There is nothing else like it. Why don't you try it, now, while we are in the Anita Whitney Party Building Drive to have 10,000 Communists in California by the end of the year?

Attend Second Congress

In December there will take place California's Second Party Builders' Congress. YOU will be an honored guest . . . YOU will receive a gold Anita Whitney pin . . . provided YOU have five or more recruits to your credit.

Of course we don't need prizes to make us want to build our Party, but this job of achieving the goal of the first 10,000 Communists in our State is of historical importance. It's tremendous! And every comrade who takes part in this event will be recorded and recognized by the entire Party. Attending the Congress, receiving your gold pin, will be a crowning achievement for your year's work.

Examples to Follow

Five hundred of our best Party Builders in the State are expected at this Congress. You can be one of them by recruiting five or more new members. If you've already recruited two or three, get to work and sign up the remaining two or three. We already have outstanding examples of comrades who have recruited, not only five, but as many as eighteen! One comrade in Alameda County did that swell piece of work. Then we have Comrade Adams in Bakersfield section who has seventeen to her credit and still another Bakersfield comrade who has signed up seventeen! Santa Barbara has a comrade who brought in eight new members since the start of the drive. **THESE ACCOMPLISHMENTS SHOULD BE A RINGING CHALLENGE TO EVERY PARTY MEMBER.** A Communist without a gold pin in December cannot be satisfied with himself and his Communist work in 1938.

Don't just WATCH the Party grow. Do YOUR part in making it grow!

Negro People Belong to Our Party

The decision of the State Convention to recruit 300 Negro people into our Party during the Anita Whitney Drive has been taken very seriously by some of our county organizations. Although the number of counties reporting an increase in Negro recruiting is still far too small. Eighty Negro workers have been recruited to date.

We have two excellent examples of what can be done when an effort is really made. **One comrade in Alameda County brought in eighteen Negroes, while in the Bakersfield section, three comrades recruited eighteen Negroes—nearly half of their total recruits!** These outstanding examples show that the Negro people are ready to come into our Party in large numbers. We have

every possibility of going way over the quota of 300 new Negro recruits by November 7th, if our comrades will make use of this favorable situation.

Negro comrades who are active in political work can bring many people into the Party by carefully explaining the Party's position in the elections to the members of churches and Negro mass organizations. For example, a large percentage of the new recruits in Alameda County have been Negro church women.

The Anita Whitney Party Building Drive should become the means of reaching larger numbers of Negro people than ever before and of showing them that the Communist Party is the only Party of the Negro and white people alike.

For More Communists in the Trade Unions

At the start of the Anita Whitney Party Building Drive, our Party set for itself the goal of recruiting 2200 trade unionists in the state. Of these, 1300 were to be from the CIO and at least 900 from the AFL.

Poor Concentration Work

Figures for the first six weeks show a total of only 255 recruits, 90 from the AFL, 160 from the CIO and a few from independent unions. Only TWO railroad workers have been brought in, and this in a concentration industry! And from such an important union as the teamsters—only five recruits. Comrades! With the importance of the election campaign and the great need for trade union unity staring us in the face, it is absolutely necessary to improve our recruiting in the AFL and the Railroad Brotherhoods in particular. Without strong Party groups in these unions, we will not be able to conduct these campaign with sufficient energy.

How It Is Done

The best method of recruiting so far has been the open unit meeting—if properly organized. The Longshore unit signed up 15 workers at one such meeting. They picked out their best contacts, saw that they got to the meeting, and, after a well planned discussion, the appeal to join the Party brought results. If all our industrial units were to hold one such meeting during September, we would be bound to have a pick-up in recruiting.

While the industrial sections in San Francisco, Los Angeles and Alameda bear the chief responsibility for party building in the unions, we must ask that the trade union comrades who have been transferred into assembly district branches are going to recruit trade union people. The branches should check up on their union members in this regard.

Leading Comrades Should Recruit

Another thing that is holding up the drive is the fact that many leading trade union comrades are still not participating. If these leading comrades in the trade unions become convinced of the necessity to recruit, this will stimulate the entire Party membership in the unions to better efforts, and we would be well along the way to achieving our goal of 2200 new trade union Party members by November 7th.

On the Battlefield

In case you have not heard, California is in a heated socialist battle with the State of Illinois. Illinois has put up a brave fight in the past, failing only by a narrow margin to replace California as the second largest district in the country. This time they threaten to win—that is, if we let them. So how about it, Californians—we have to move fast to lead Illinois!

* * *

The heavyweight battle between Los Angeles and San Francisco is not coming off. Both are running neck and neck in the lightweight camp—at the bottom. And as a result, we haven't heard a peep out of them. Probably "silence is really golden." Who knows?

* * *

Louretta Adams, organizer of Kern County (Bakersfield) challenged the whole state at the Southern Regional Party Building Conference. The challenge wasn't just hot air. For Kern County has accomplished 70 per cent of its quota—with 35 new members recruited out of a goal of 50. Louretta, don't rest on your laurels. Santa Barbara is creeping up steadily having recruited 38 out of its quota of 60—or 63 per cent. And Santa Barbara is sure going strong. This competition should really bring forward some heat.

* * *

Sacramento a few weeks prior to the Browder-Foster rally, challenged Alameda. Sacramento won out. Dues payments soared to a new high. And they recruited 58 new members to date—38 per cent of the 150 goal. Alameda lagged behind, recruiting some 89 new members—21 per cent of its goal. But somehow or other, we are not yet ready to give the crown to Sacramento. Alameda does not show its punch until near the end of the fight. So watch out Sacramento.

* * *

Santa Clara started with a bang—and then what? Only 20 new recruits or 33 per cent of their objective. San Mateo with much less noise recruited 16 out of 50 or 32 per cent. So you see Milt—San Mateo is giving you a pretty good race—and you better look out. However, Milt is still cocky and assures us that Santa Clara as usual will get its man.

San Diego is tailing these two counties with 31 per cent—while San Berdoo, Contra Costa, Sonoma, Mon-

(Continued on page 4)



ANITA WHITNEY, State Chairman

Hold the New Members

Comrades: What are we doing about keeping our hundreds of new members? Since the solution of this problem is largely dependent on the degree of understanding our new members gain of the Party and the class struggle in general, it is essential that we equip ourselves with the necessary instrument for giving our new members the elementary groundwork in Party principles necessary before going into units and branches.

New Members Sections

For this purpose, new members sections can be founded in all of our large centers. In the small communities, undoubtedly one or more comrades can be assigned to specialize in the teaching of recruits. These new members sections can become terminal stations, standing midway between the sponsors and an active Party life, equipped and ready at all times to render an indelible service to the new member.

What Has Been Done

In San Francisco the new members section has a governing body consisting of a number of new unit and branch organizers and instructors who treat their work in the section as their major Party responsibility. In addition to the large committee, there is an executive board consisting of an Organizer, Educational Director, Membership Director, Dues Secretary, and Literature Agent. The section committee meets twice a month to take up the general business of the section, and for the purpose of hearing reports from the or-

(Continued on page 4)

Where Do You Stand?

	Re- cruited	%	Nov. 7 goal
Bakersfield	35	70	50
Santa Barbara	38	63	60
Tulare	4	40	10
Sacramento	58	38	100
Santa Clara	20	33	60
San Mateo	16	32	50
Arizona	16	32	50
San Diego	31	31	100
San Berdo	7	23	30
Alameda	87	21	400
Sonoma	8	20	40
Los Angeles	282	16	1700
San Francisco	155	15½	1000
Contra Costa	11	14	80
Mountain	1	10	10
Eureka	5	10	50
Monterey	4	4	100
Merced	0	0	30
Ft. Bragg	1	0	10
Fresno	0	0	50
	815	20	4000

What do these figures indicate? What is the story behind them? Let us take Bakersfield as an example. From the very first day of the Drive, Bakersfield has been in the lead. Why? Because the majority of the membership understood what the increase in the Party's strength in Bakersfield would mean to their OWN struggles and to the work of their OWN units. When we combine this with personal leadership which Comrade Louretta, their Section Organizer, who recruited 17 new members HERSELF, is giving to the drive, we then have the correct answer—35 new members—70 per cent of their goal of 50 already completed.

Take the example of Santa Barbara where Comrade Alice is the Membership and Drive Director. Comrade Alice "took the bull by the horns," has already recruited more than five members and is the real spark-plug of their campaign.

Can other Counties do the same? Of course they can. But let us not forget that time is passing QUICKLY and that the Counties which have NOT YET begun to move full speed ahead, must gear their machines and their membership—and that means YOU Comrades—to step into work and start recruiting.

This is particularly important in Los Angeles, San Francisco and Alameda Counties who have not yet hit their real stride and whose mass recruiting is the KEY to our goal of 4000 new members.

Let's Speed up The Dave Doran Recruiting Drive!

The Tenth National Convention of our Party decided to undertake a membership drive to recruit 5,000 new members into the Young Communist League . . .

"In memory of Dave Doran, in the interests of a free and happy younger generation, our Party will put its shoulder to the wheel, and unitedly carry to a successful conclusion this special drive in the memory of one whom we shall never forget, our dear comrade Dave Doran."

Wm. Z. Foster,
Chairman.

Earl Browder,
General Secretary
C. P., U. S. A.

What's Been Done

We already have certain outstanding examples of Party branches that show how to work in order to fulfill our pledge to recruit 500 new members for the Young Communist League in California.

The Culinary Branch in San Francisco helped initiate a sports movement in the union and as a result of the youth contacts made in this way, recruited a sufficient number to start a YCL branch—the first industrial branch in San Francisco.

The Watts Branch of the Party in Los Angeles organized a meeting for its youth contacts to hear a speaker from the Young Communist League. Result—a new YCL branch in Watts with a dues paying membership already over 50!

In Bakersfield, San Bernardino, and Templeton, the Party branches have in the past few weeks built up functioning YCL branches.

Hints to Follow

These examples show what can be done. As a check on your branch, have the following steps been taken? Have you a youth director, and is he in touch with the state office of the YCL? Do you have a list of youth contacts, including sons and daughters of Party members, and arranged to visit them? Have you put in an order for the appeal to industrial youth, "Can Youth Beat the Depression?" One cent a copy, or 75c a hundred.

Remember: ALL PEOPLE UNDER 25 SHOULD BE RECRUITED ON YCL CARDS. ALL RECRUITS FOR THE YCL COUNT ON YOUR BRANCH QUOTA FOR THE DRIVE.

Every member a Party Builder! Fulfill your pledge in the Anita Whitney Party Building Drive for 4,000 new members.

On the Battlefront

(Continued from page 3)

terey have signed a truce not to outdo each other for last place.

Merced and Fresno have been asleep entirely.

Eureka will be heard from next time—for Charlie the new organizer is an up and coming young fellow. Watch the next issue for good news from the sticks.

* * *

The battle has begun. This time we will do nothing to bring about peace. So let the cannons roar with the thousands of new recruits to make California the banner state of the union.

Hold the New Members

(Continued from page 3)

ganizers and instructors, and discussion for improving their work.

Improvement Needed

One shortcoming that now exists is the inadequate number of capable organizers and teachers. San Francisco is partly solving this by involving various County leaders, whose rich Party experience can add greatly to the political level of the new members training period. Another problem is to see that the sponsor continues his interest in the progress of his recruit—to see that he attends his New Members class regularly, and otherwise aids him in becoming at home in the Party.

Aim of New Section

If these problems receive the serious attention of the sponsor as well as of the new members section, we will keep the great majority of our new recruits in the Party. LET US KEEP EVERY ONE OF OUR NEW MEMBERS!

**Have you read and studied
"Whom and How to Re-
cruit." Get a copy today!**

Let's Grow in The Rural Areas

The Tenth Convention of our Party stressed the need for immediately improving our work among the farmers and of recruiting more of them into the Party. In view of the fact the banker-controlled Associated Farmers are conducting a vigorous campaign among the farmers in an effort to tie them to their fascist-minded organization in order to use the farmers against the trade unions and all progressive organizations, it becomes very important for us to effectively combat this. We must not allow the farmers to be duped into becoming fascist storm troops!

What to Do

How shall we go about achieving the quota of fifty new farmer members by November 7th? So far, only 7 have been brought in. Bakersfield, for instance does some fine recruiting—but none of the new members are farmers! How about assigning a few comrades to concentrate on farm work, Bakersfield? Other agrarian areas, please note.

At present the majority of our Party members in the rural areas are not farmers, but these members should also concentrate on bringing farmers into the Party. With the help of the comrades who are farmers, contact lists can be drawn up from among the progressive members of the Grange and Farmers Union. These farmers should be systematically contacted to discuss with them the important questions of the day: how does the election campaign concern them? What is the record of the local assemblyman who is up for reelection, etc.

City Comrades Can Help

In order to broaden this work, comrades in near-by cities and towns could spend a week-end or Sunday now and then, contacting farmers. The Farm Legislation Program of the Party can be used in this work.

Many a progressive farmer will be perfectly willing to discuss Communism but will be very confused about our program. We must answer his questions very patiently; tell him about conditions of farmers in the Soviet Union. Bring him literature on the subjects that trouble him.

If we will conscientiously begin this groundwork now, and really follow up our best contacts, we can surely recruit many of these farmers into the Party by November 7th.