

Humboldt State University

Digital Commons @ Humboldt State University

Yearbooks

University Archives

1984

Humboldt State University Yearbook

Humboldt State University
Delma Studios Inc.

Follow this and additional works at: <https://digitalcommons.humboldt.edu/yearbooks>

Recommended Citation

Humboldt State University, "Humboldt State University Yearbook" (1984). *Yearbooks*. 28.
<https://digitalcommons.humboldt.edu/yearbooks/28>

This Book is brought to you for free and open access by the University Archives at Digital Commons @ Humboldt State University. It has been accepted for inclusion in Yearbooks by an authorized administrator of Digital Commons @ Humboldt State University. For more information, please contact kyle.morgan@humboldt.edu.

LD
729.6
.A6
H89
1984
ARCHIVES



yearbook

HUMBOLDT STATE UNIVERSITY

HUMBOLDT STATE UNIVERSITY 84

Message From The President

Much has been said and written of the impact a university has on the lives of its students.

Certainly, a university does make an impact upon the lives of all who come to it in quest of learning. It is also true, however, that every student leaves an imprint upon the university.

For whatever reason you came to Humboldt and stayed on—whether it was the physical environment, the academic qualities, or the quality of the people—something of your own spirit and your own character remains behind, always to be a part of what this University shall signify in the eyes of everyone who will come to know it.

The beauty of this yearbook is that it preserves in photos and text the manifestation of our common spirit. As you turn the pages and look back on your days as a student here at Humboldt, I sincerely hope that your reflections will be both joyful and heartwarming.

May you flourish in your life's work. May good health be your constant companion and may you return often to Humboldt. You made the University a pleasant place while you were here, and your return will make it more so.



Alistair W. McCrone

Alistair W. McCrone

PHOTOGRAPHY

Robert Couse-Baker

Stephen P. Kinder

Mark Larson

Mark H. Lind

Charlie Metivier

Jeff Nye

Dar Spain

Cheryl White

Mark Wilson

ART

Jay Brown

DESIGN AND LAY-OUT

The Office of University Relations

Sept. 1983
Dear Mom & Dad,
It's hard to believe, but
I'm back at school already.
Looking forward to my
final year! Journalism,
botany, anthro. plus
some fun courses, too—
more later ...



STEPHEN P. KINDER



CHARLIE METIVIER

ROBERT COUSE-BAKER





***"Lots of new faces this quarter.
Got most of the courses I need,
and they opened a new pizza
parlor on campus. Great!"***

MARK H. LIND



CHARLIE METIVIER



ROBERT COUSE-BAKER

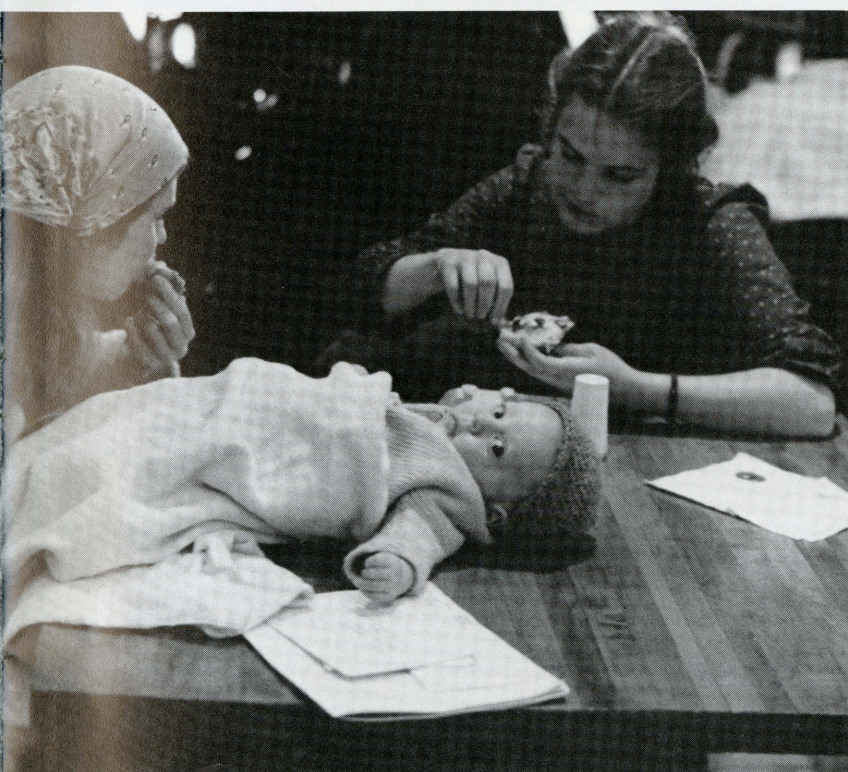


ROBERT COUSE-BAKER



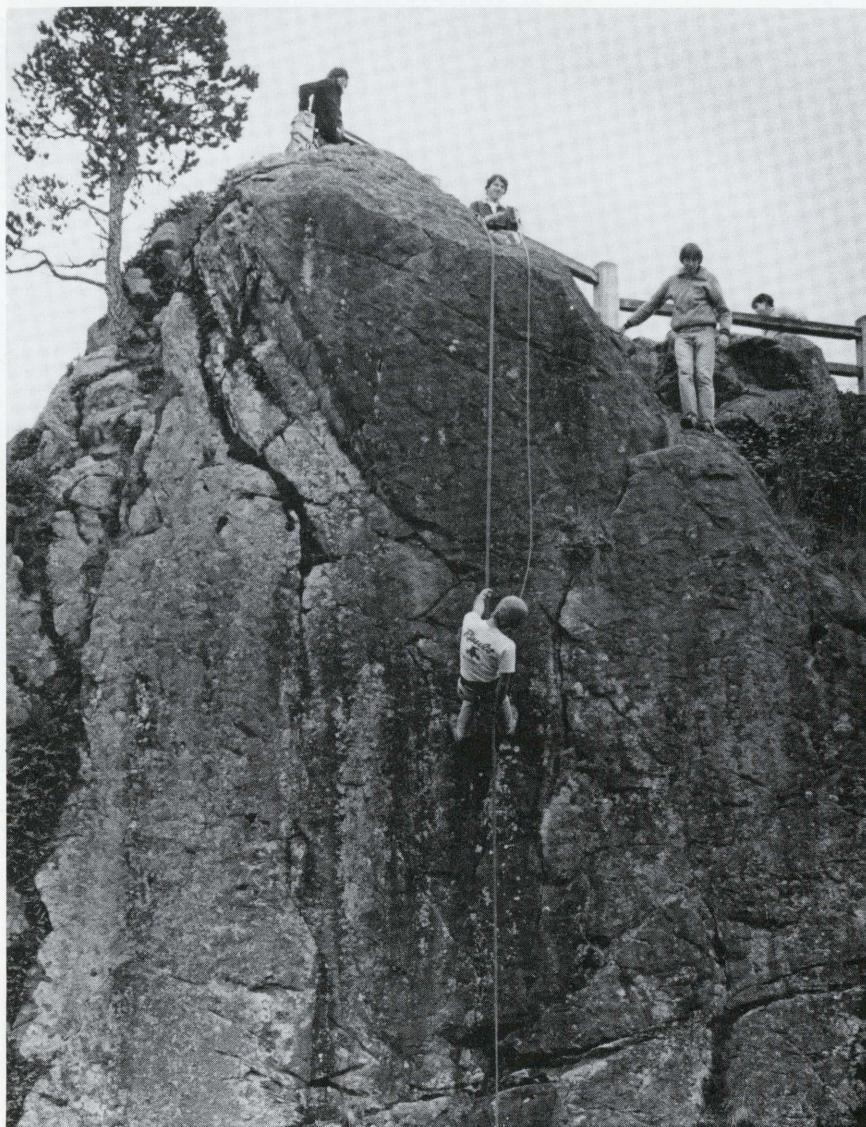


ROBERT COUSE-BAKER



***"Had our first rain shower this week.
Now I know I'm really back in
Humboldt County!"***

ROBERT COUSE-BAKER



JEFF NYE





CHARLIE METIVIER



CHARLIE METIVIER

***"Don's Donuts, Patrick's Point, the
Marching Lumberjacks...there's no place
like Humboldt!"***



CHARLIE METIVIER

"Actually snowed on campus in December! Strange to see the campus covered in white..."



CHARLIE METIVIER



MARK LARSON



ROBERT COUSE-BAKER



CHERYL WHITE



CHARLIE METIVIER

"Did I tell you I thought about trying out for crew? I was going to, until I found out they have to get up at 5 a.m.!"



CHARLIE METIVIER





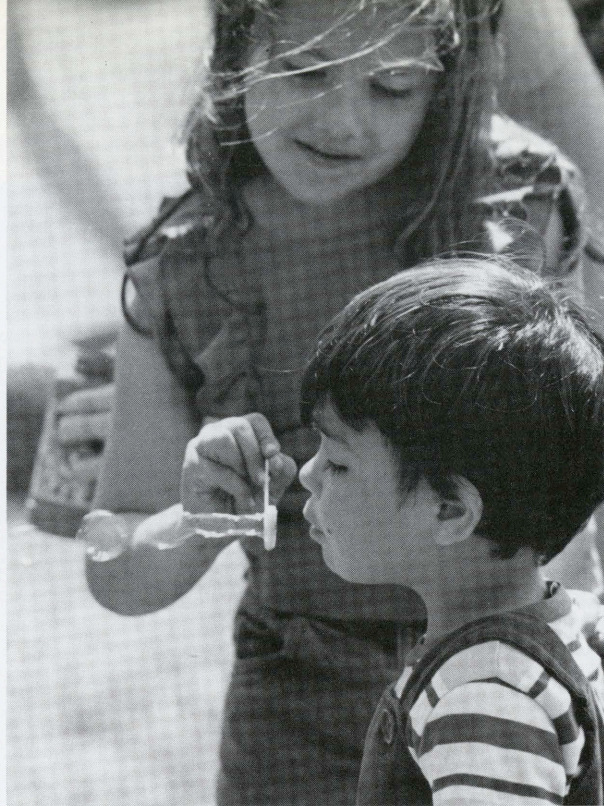
CHARLIE METIVIER



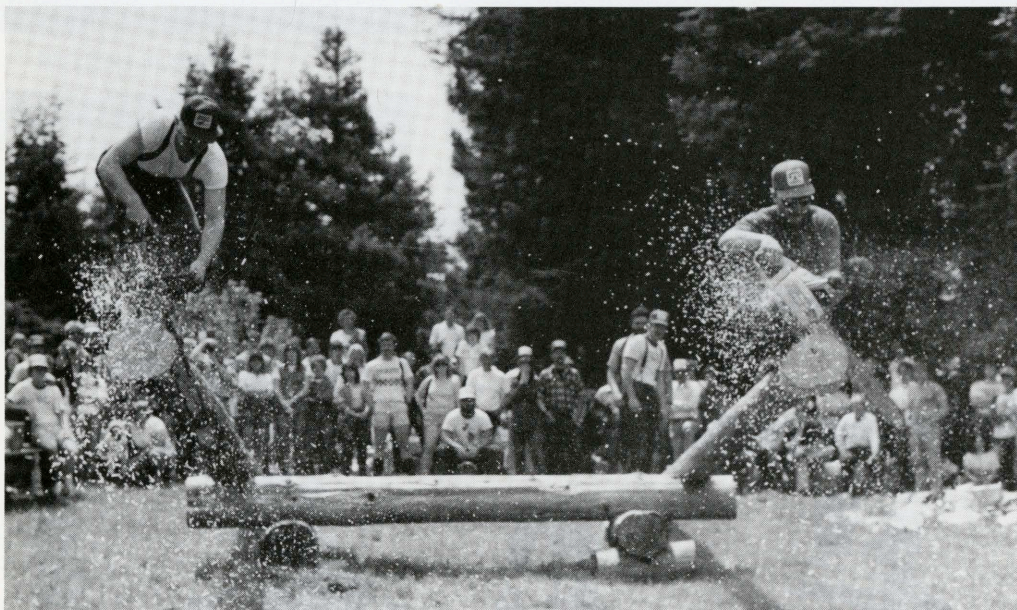
CHARLIE METIVIER



MARK WILSON



CHARLIE METIVIER



ROBERT COUSE-BAKER



MARK LIND

*"Great weather for
Lumberjack Days...log
rolling, axe throwing
and (ugh!) cigar
smoking."*



ROBERT COUSE-BAKER

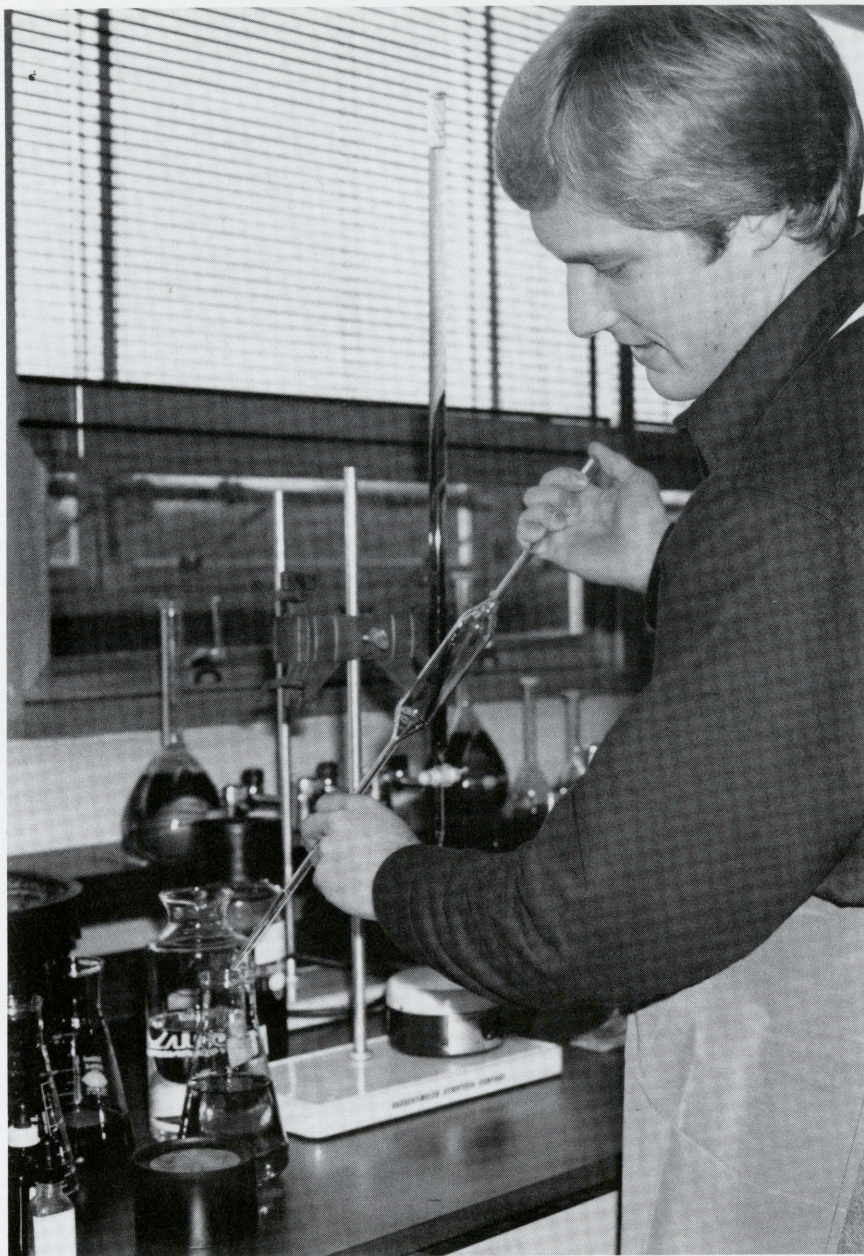


ROBERT COUSE-BAKER



CHARLIE METIVIER

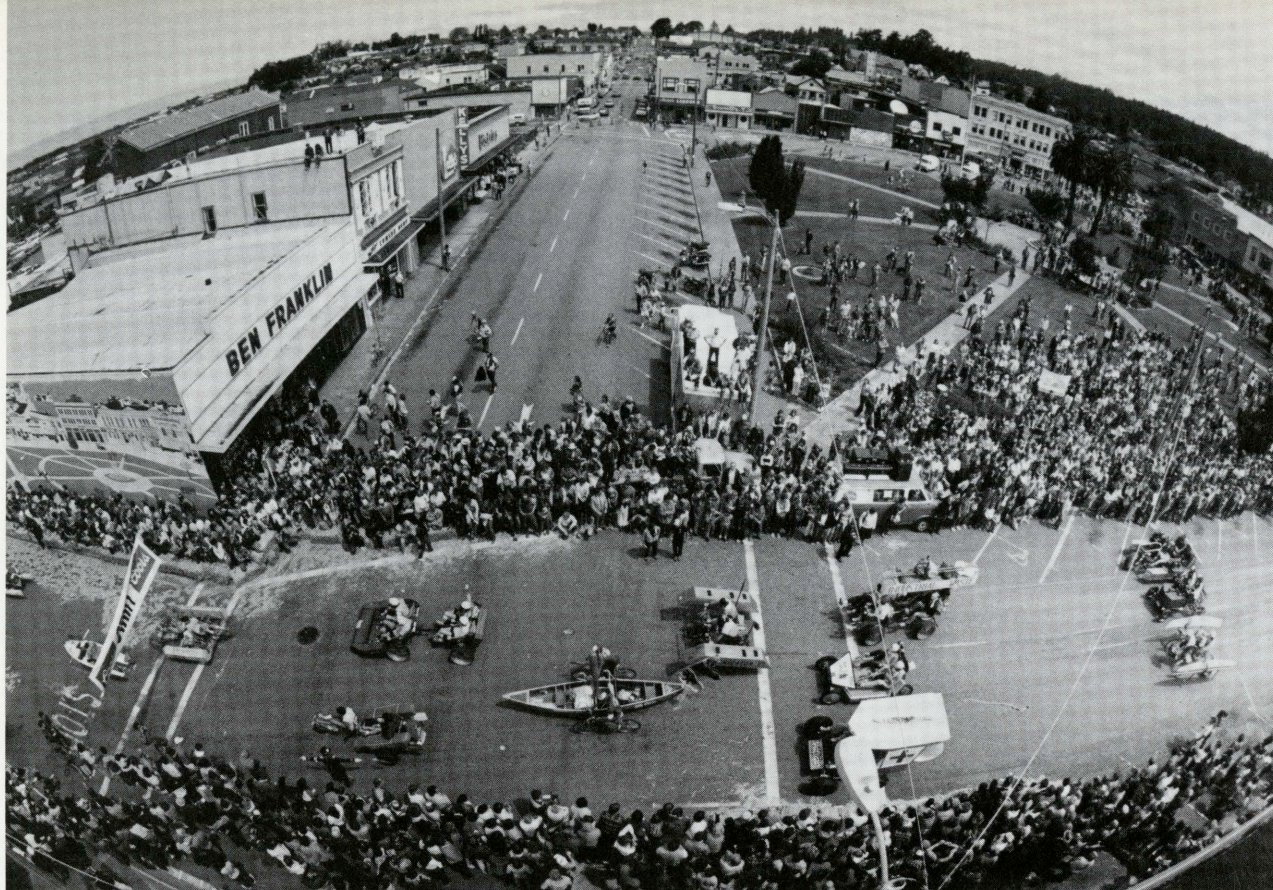




ROBERT COUSE-BAKER

"Lots of fun activities this spring. Still sticking close to the books so I can graduate in June. Hope the whole family can come!"

CHARLIE METIVIER



CHARLIE METIVIER



CHARLIE METIVIER

ROBERT COUSE-BAKER





ROBERT COUSE-BAKER

"The media event of the year is the indescribable Kinetic Sculpture Race...Humboldt students came in first...and last!"



CHARLIE METIVIER

"Finals are just around the bend. I want to take a break from studying and go down to the plaza and goof around..."

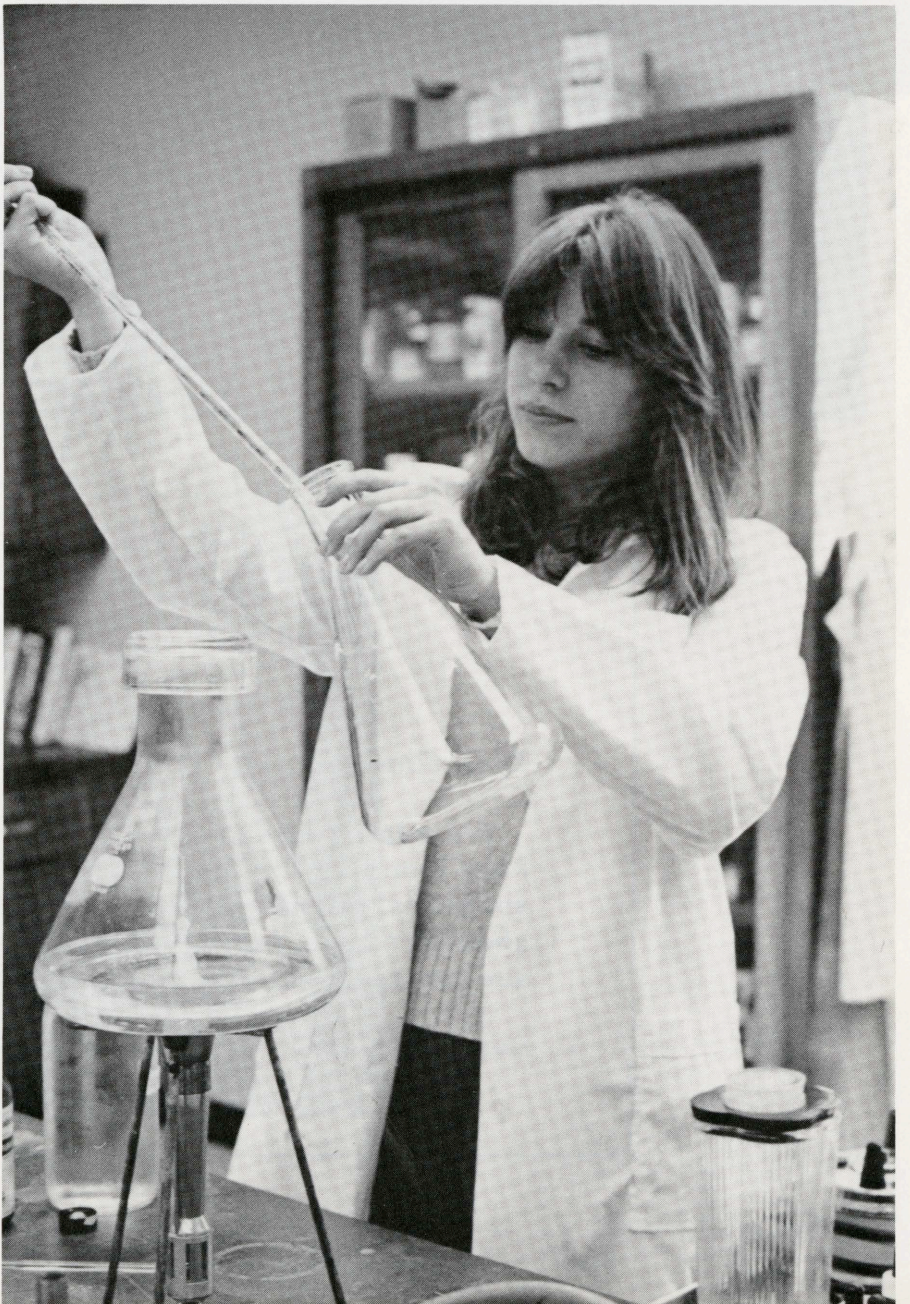




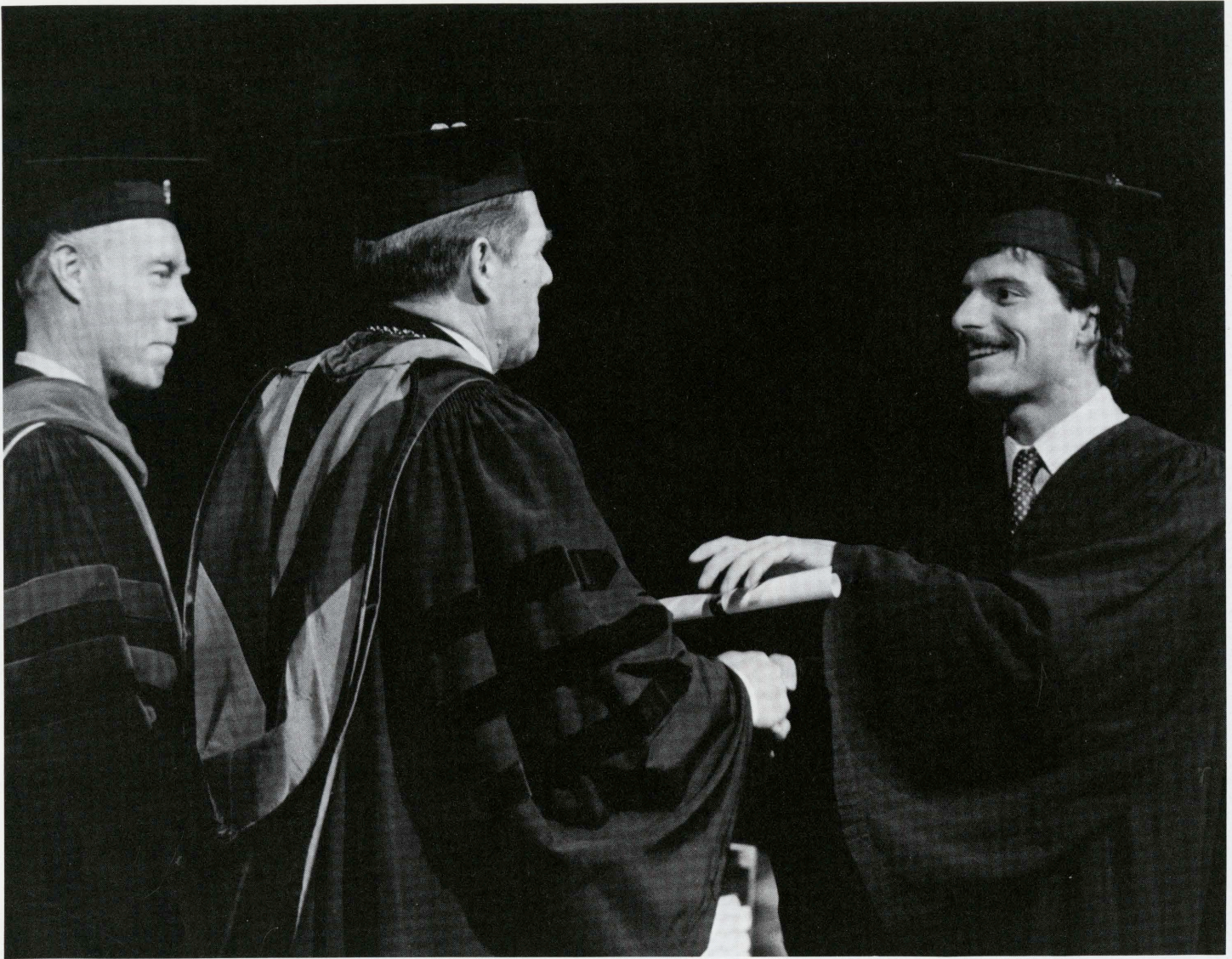
CHARLIE METIVIER



CHARLIE METIVIER

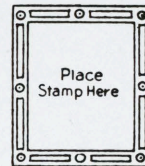


DAR SPAIN



CHARLIE METIVIER

POST CARD

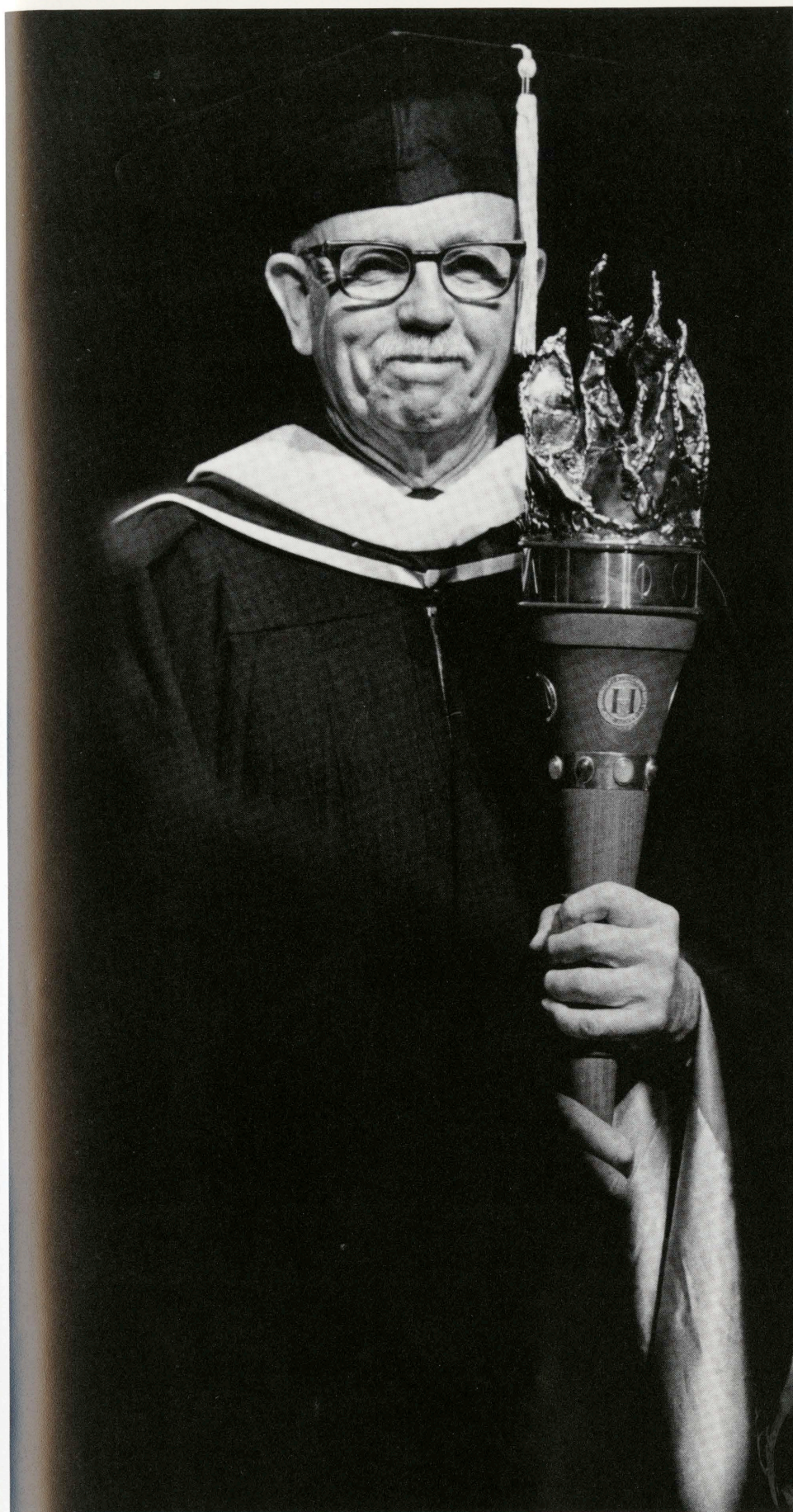


Dear Grandma and Grandpa,

We missed you at Commencement! You would have loved all the festivities and wonderful speeches! Thanks for the present (you really shouldn't have, but I'm glad you did!) Hope to see you really soon.

Love,

The College Graduate!



CHARLIE METIVIER



ROBERT COUSE-BAKER

Welcome, Alumnus!

Recently you completed an important educational passage that took you from the ranks of students into the legions of alumni. It also made you eligible for membership in the Humboldt State University Alumni Association.

For over three decades, the Association has advanced the welfare of the University, promoted the common interests of alumni and students, and served as a liaison between the University, alumni and the community.

We sponsor such alumni events as trips abroad, the Homecoming banquet, and the publication of this senior yearbook.

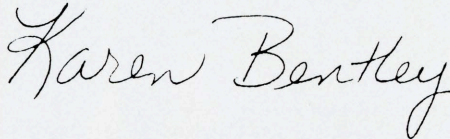
We also provide scholarship assistance to students and support the University development.

A membership in the Alumni Association offers you a variety of discounts, special publications and other privileges.

I sincerely hope that you will become an active member of our Association, and thereby help build an even greater Humboldt State University.

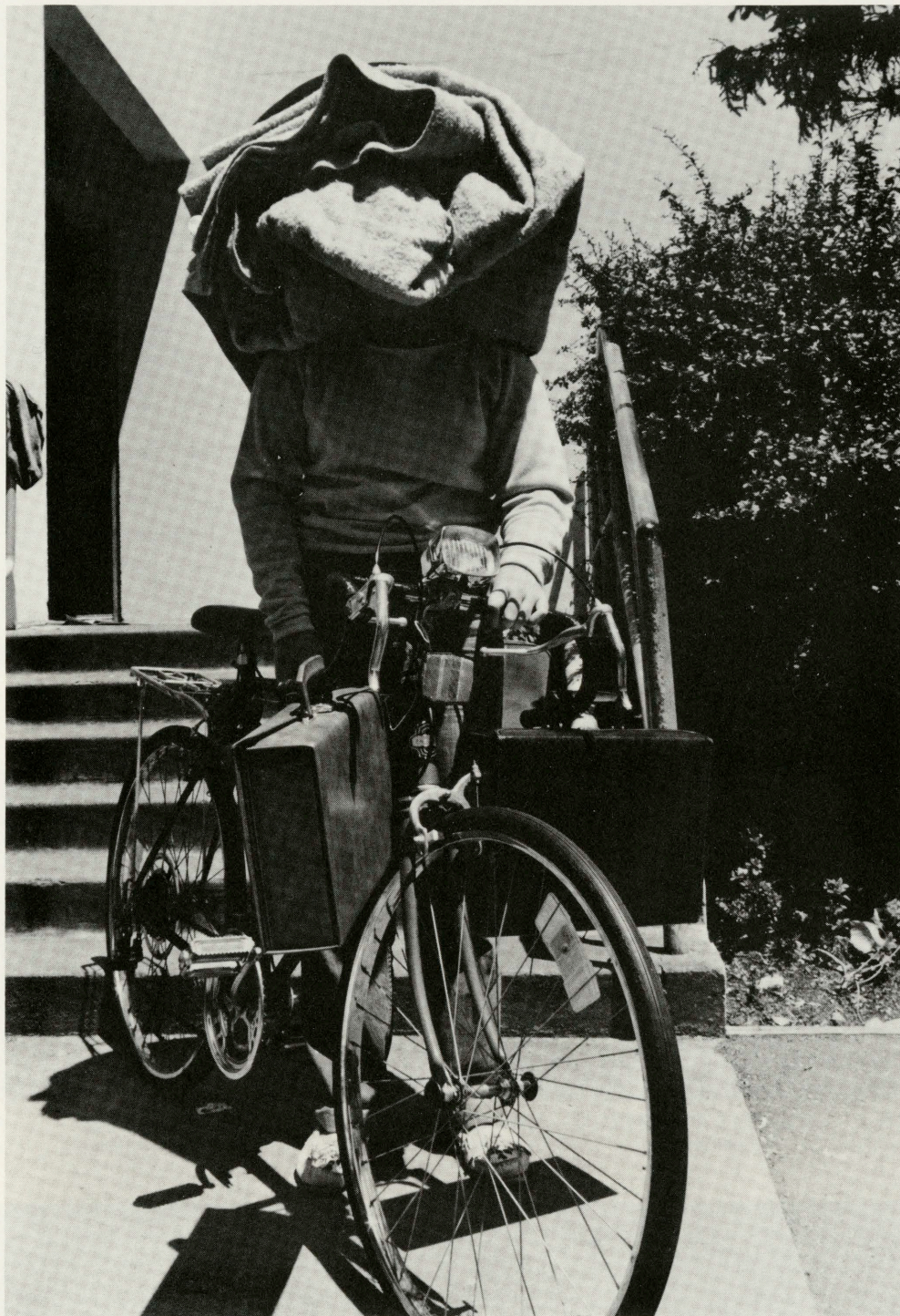
Join us, won't you?

Good fortune and good health,

A handwritten signature in cursive script that reads "Karen Bentley".

Karen Bentley, Class of '76
President
HSU Alumni Association

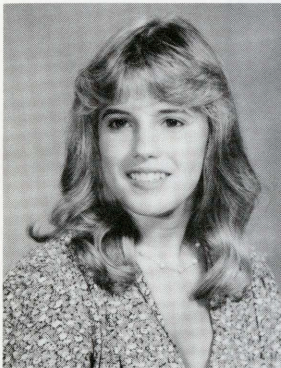
Seniors



ROBERT COUSE-BAKER



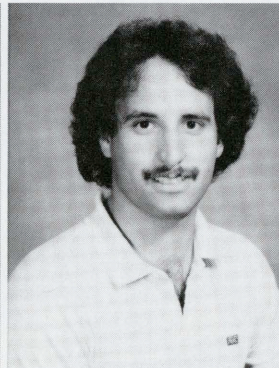
GRADUATES



STEPHANIE ADLER
BS, Computer & Information Systems



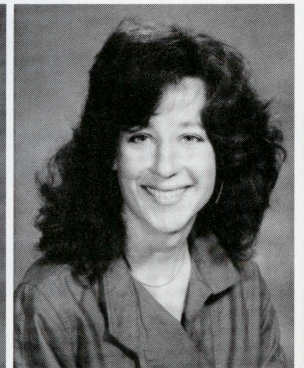
EBTESAM S. AISHOBAILI
BA, Home Economics



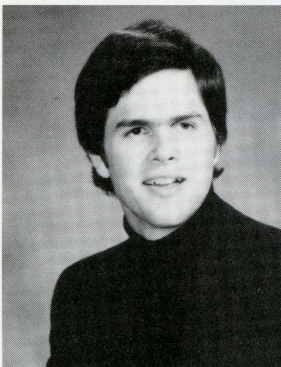
MARC J. ALEXANDER
BS, Nat. Res. Planning & Interp.



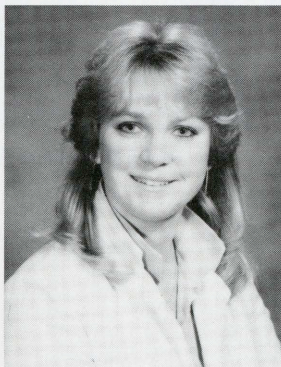
LORI ANNE AMORDE
BA, Home Economics



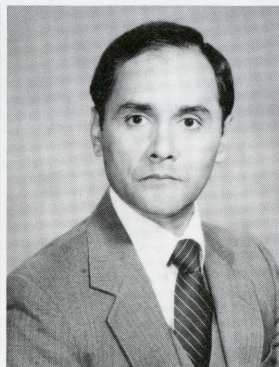
APRIL ANDERSON
BA, Zoology



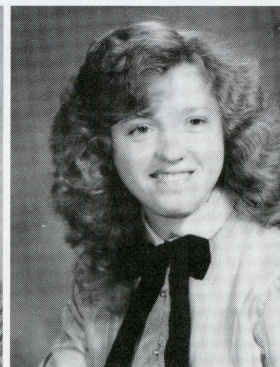
SCOTT S. ANDERSON
BA, Music



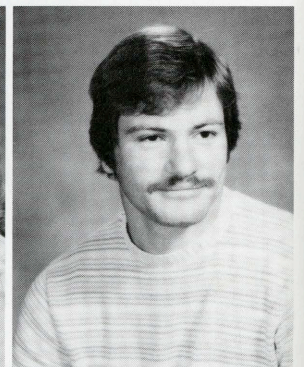
KATHRYN M. ARRINGTON
BA, Journalism



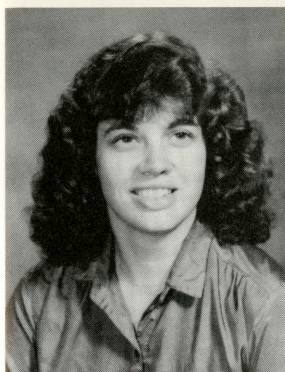
WILLIAM AULET



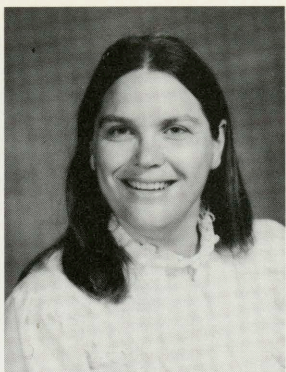
THERESA G. BAKER
BS, Nat. Res. Planning & Interp.



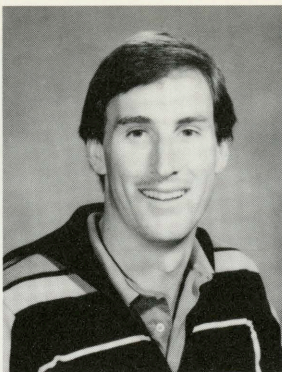
TINO A. BAMBERGER
BS, Business Administration



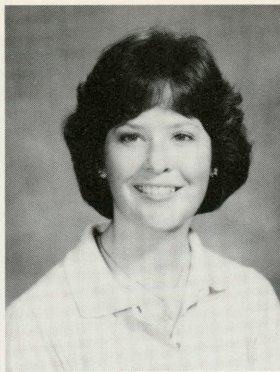
CHERYL BANKS
BA, Psychology



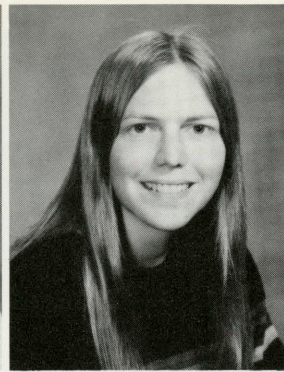
DIANA E. BARKER
BA, Psychology



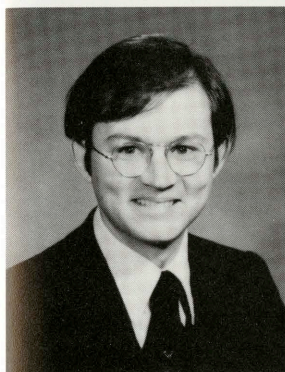
JAMES R. BARROW
BA



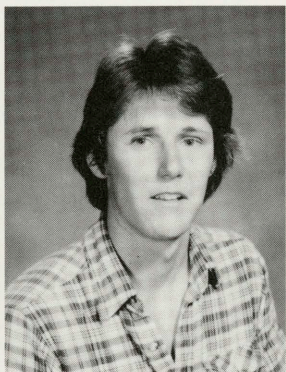
ELLEN BARTHMAN



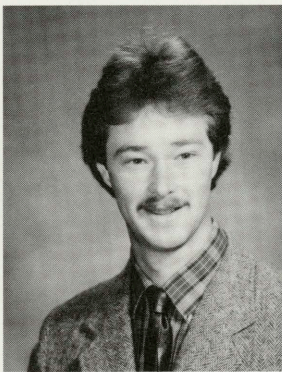
PATRICIA R. BATES-NUNEZ
BA, Psychology



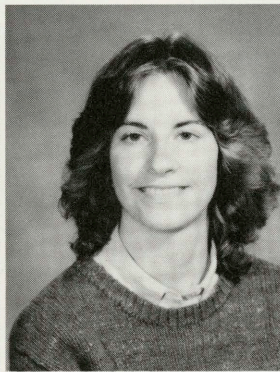
ROBERT J. BELL
BA, German



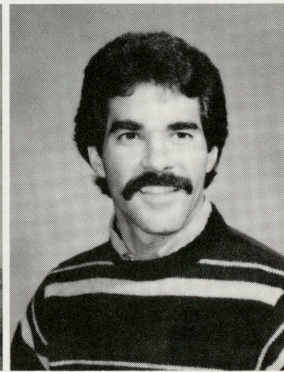
BARRY A. BENKO
BA, Geology



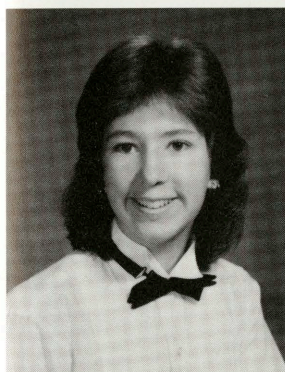
BRIAN J. BERNDT
BS, Environmental Resources Eng.



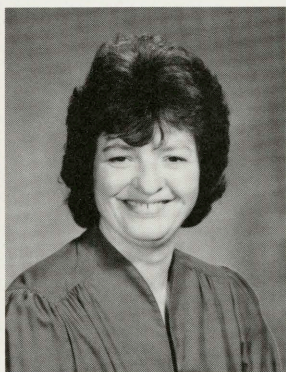
JOAN M. BEWLEY
BA, Psychology



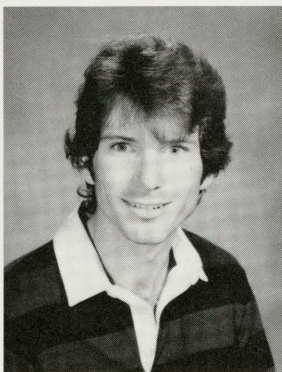
GARY M. BIRD
BA, Geography



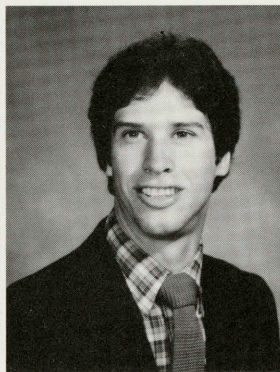
ROBIN J. BJELK
BA, Speech Communication



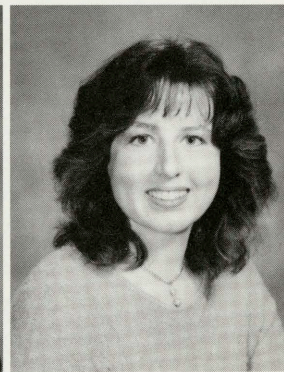
SANDRA D. BLASZAK
BA, Sociology/Social Work



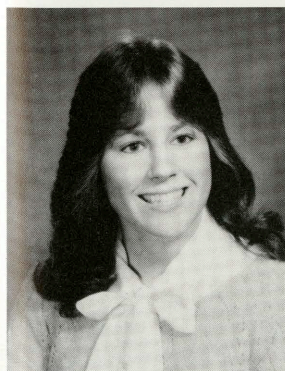
PAT BRADY
BS, Geology



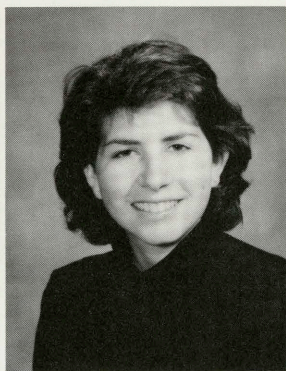
RANDOLPH C. BRANDT
BS, Oceanography



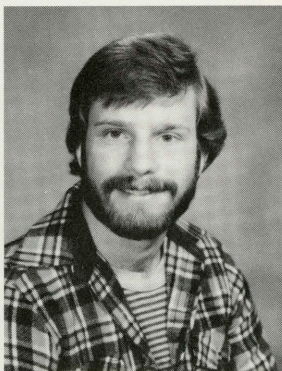
PAULA S. BRONSON
BA, Psychology



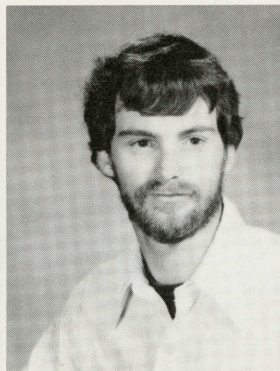
DEBBIE L. BROWN
BS, Business Administration



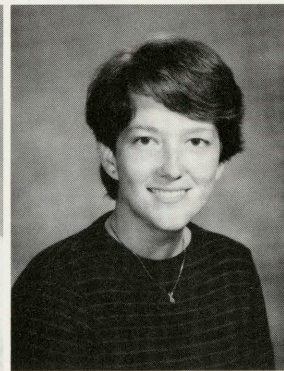
NANCY J. BROWN
BA, Geography



KEVIN J. BRUMMOND
BA, Journalism-Public Relations



DANIEL T. BUCKLEY
BA, Journalism



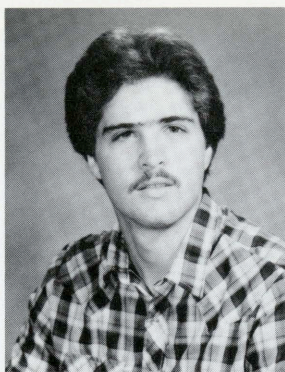
SOPHI BUETENS
BA, Journalism/Spanish





Photos by Robert Couse-Baker

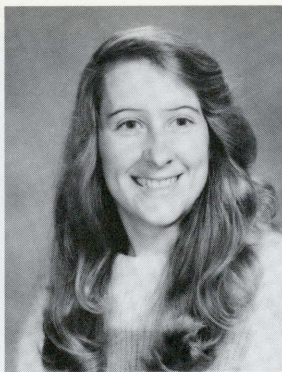




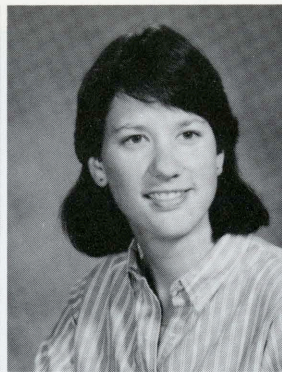
MICHAEL J. BUNTJER
BS, Fisheries



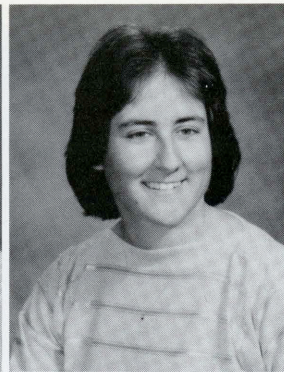
BONNIE J. BURCHILL
BS, Forestry



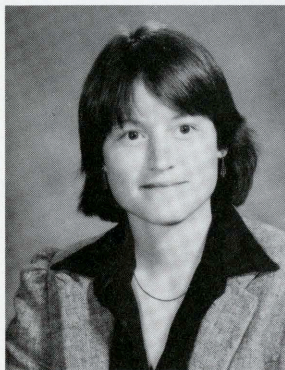
ANN M. BUTLER
BA, Art



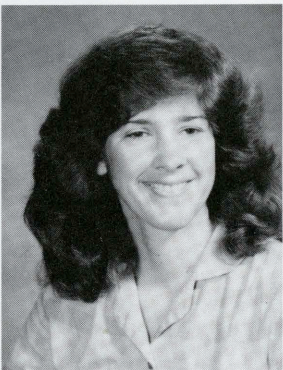
MISSY CABLE
BA



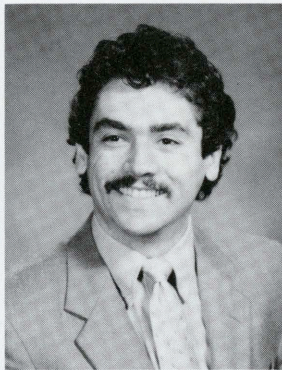
PATRICIA CAMOZZI
BS, Bus. Administration-C.I.S.



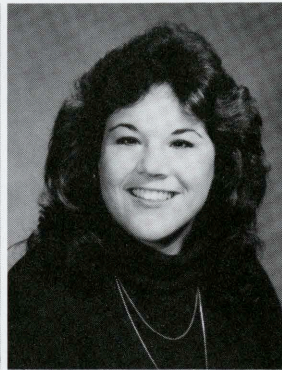
MERANY K. CARPENTER
BS, Accounting



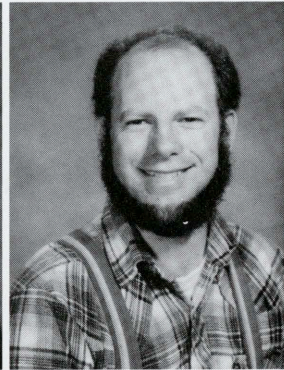
DONNA LYNNE CARRELL
BA, Environmental Biology



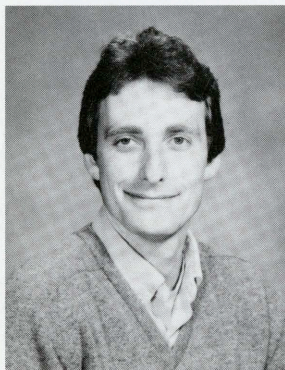
DAVID J. CATTELL
BS, Business Administration



SUZANNE J. CECCHI
BS, Management



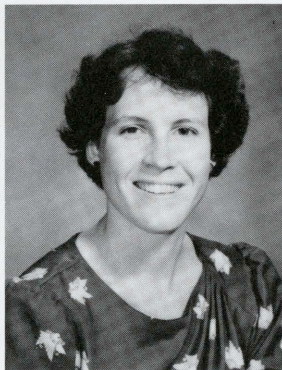
MICHAEL A. CHANDLER
BA, Psychology



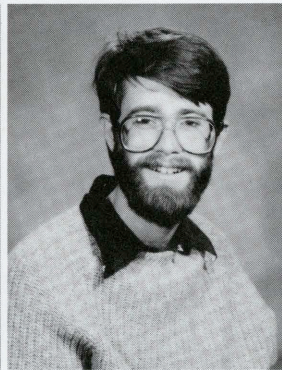
DANIEL W. COCKCROFT
BS, Accounting



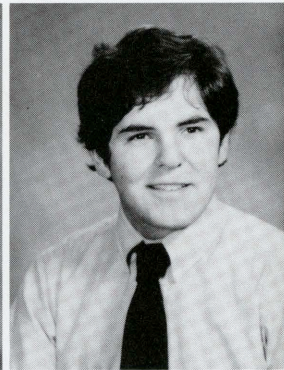
DEBORAH ROBIN COHEN
BA, Journalism-Public Relations



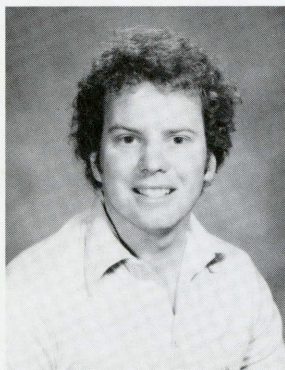
COLLEEN Y. COLBERT
BA, Journalism



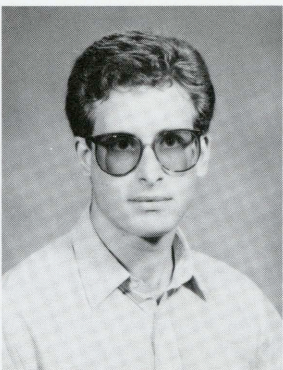
DAVID A. COLLINS
BS, Business Administration



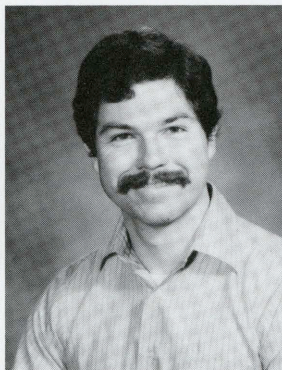
RANDOLPH W. COLLINS
BA, Industrial Arts



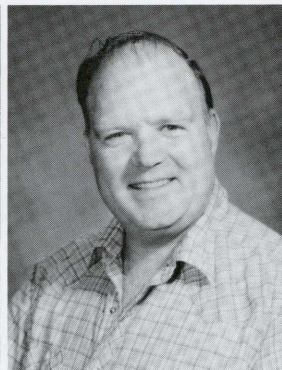
JOHN R. COOK
BS, Geology



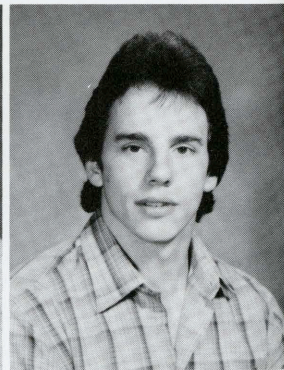
IAN M. COOPER
BA, Political Science



KEVIN COTTER
Biology/Math. (Single Subj. Credit)



ROBERT M. CRANE
BS, Nursing



JAMES DALE
BA, Physical Education



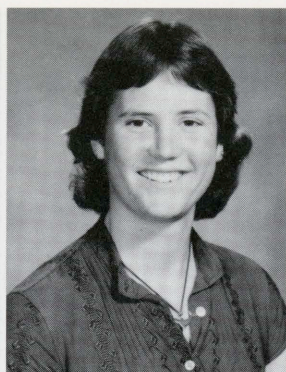
NANCY H. DAVIS
BA, Psychology



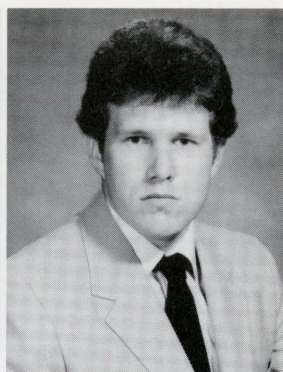
RACHELLE L. DAVIS
BA, Speech Pathology & Audiology



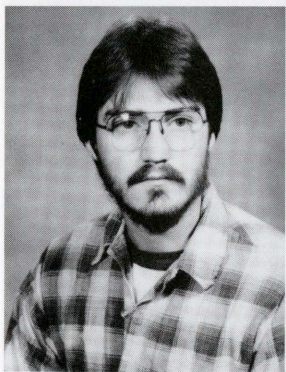
AGNES S. DE LUCCHI-DOBLE
BA, Theatre Arts



NANETTE L. DE MALLEVILLE
BA, Recreation Administration



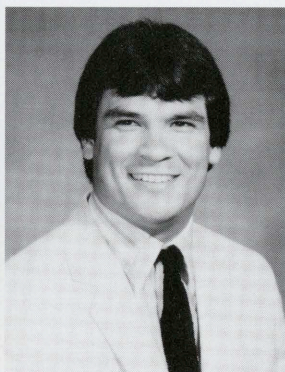
MARK W. DELAND
BS, Liberal Studies/Mult. Subj. M/S



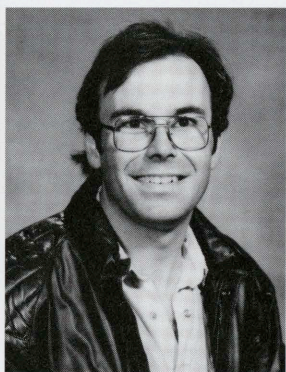
DONALD R. DESNOYER
BA, Industrial Arts



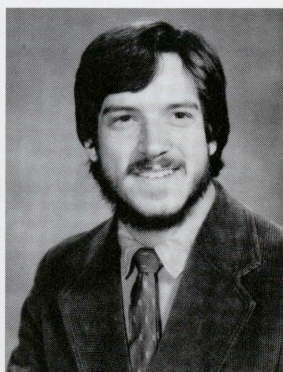
ESTHER KIM DIAS
BS, Business Administration



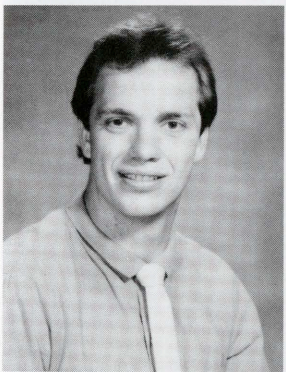
DEAN A. DIAZ
BS, Personnel Management



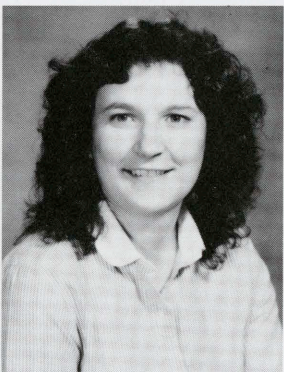
JACK C. DICKINSON
BA, Geography



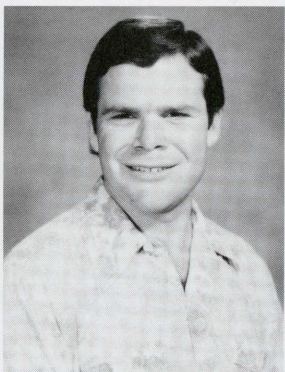
DREW C. DIGIOVANNI
BA, Behavioral Sciences



MATTHEW DISKIN
BA, Speech Communication



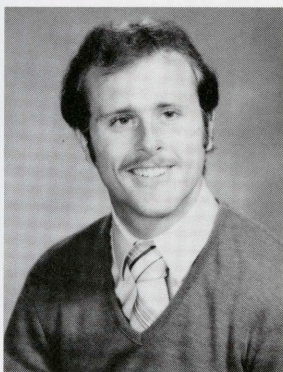
BETH A. DOLAN
BS, Business Administration



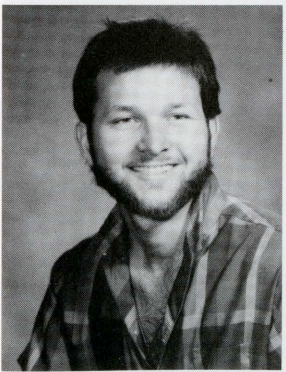
MARK DONDERO
BA, Journalism



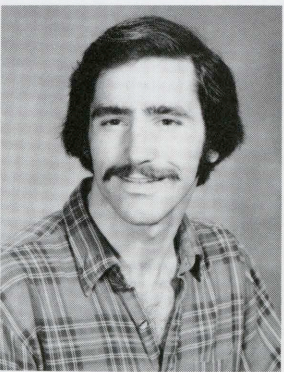
MARY E. DOPPLER
BS, Geology



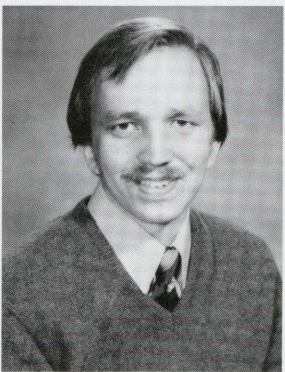
THOMAS DORST
BS, Business Administration



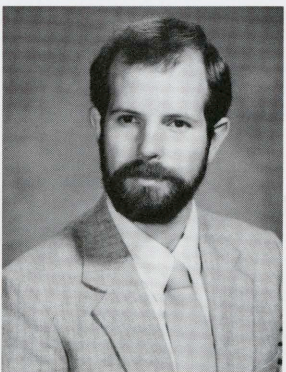
TIMOTHY MATTHEW DOYLE
BA, Art



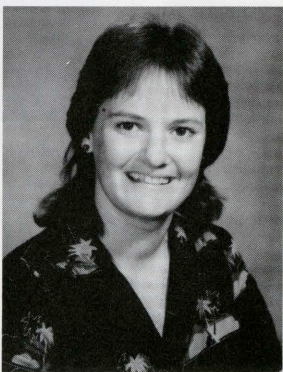
PIERRE H. du VAIR
BA, Biology/Economics



JOHN B. EBERL
BS, Fisheries/Biology



STEVEN E. EDMISTON
BS, Business Administration

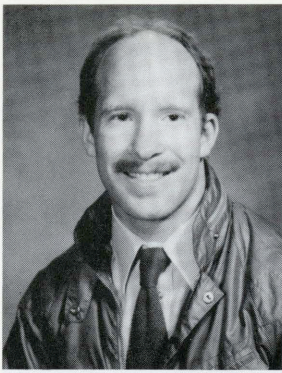


CAROL J. EGAN
BS, Business Administration

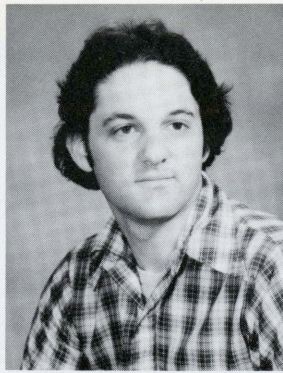
Robert Couse-Baker



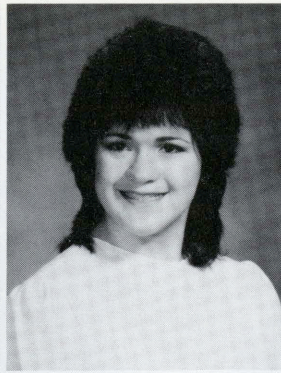




ALLAN EKBERG
BS, Business Administration



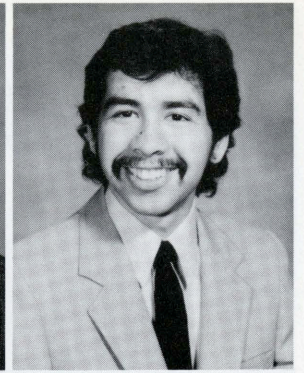
MATTHEW W. ELKINS
BA, Journalism



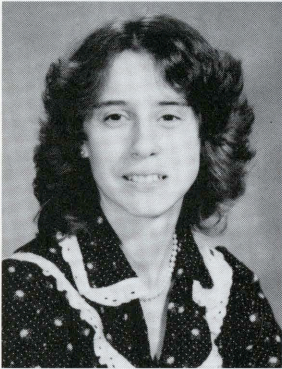
STEPHANIE ERNAGA
BA, Biology/Medical Technology



JENNIFER L. ESTRADA
BS, Home Economics



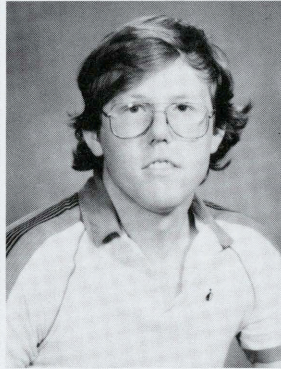
LARRY F. ESTRADA
BS, Forest Resources Management



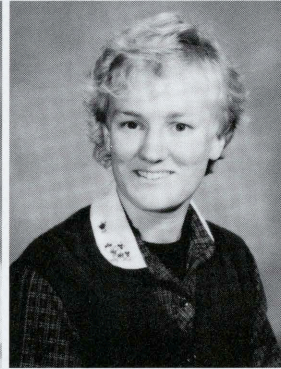
TAMMY D. FEATHER
BA, Biology/Medical Technology



LAURA G. FELSTEN
BA, Social Science



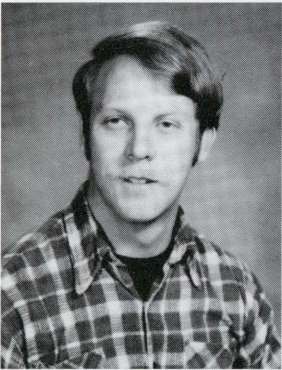
CLARK FENTON
BA, Geology



ERIN K. FLINN
BA, Biology



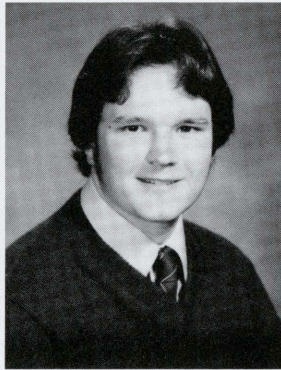
JANET FLOREY
BS, Wildlife Management



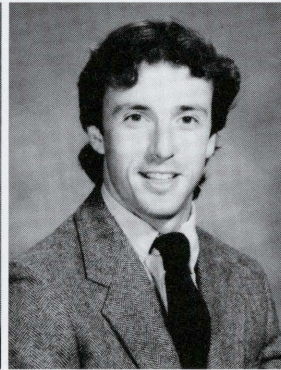
KEVIN J. FOERSTLER
BS, Forestry



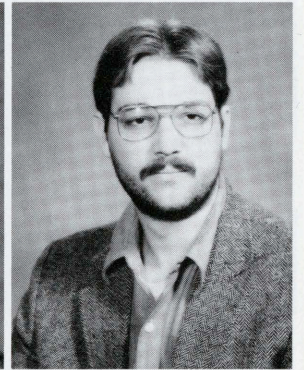
DEANNA L. FONTANES
BA, Child Development



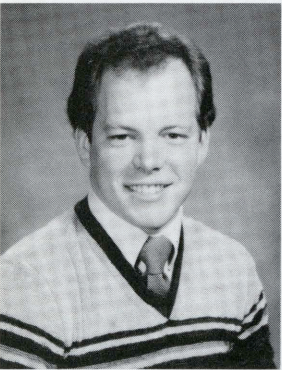
STEPHEN J. FOX
BS, Wildlife Management



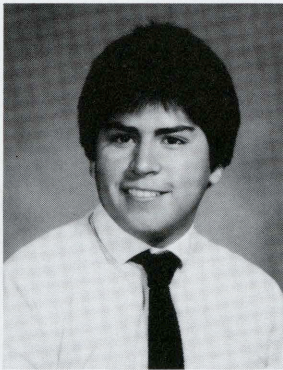
CHRISTIAN H. FRIIS
BS, Marketing



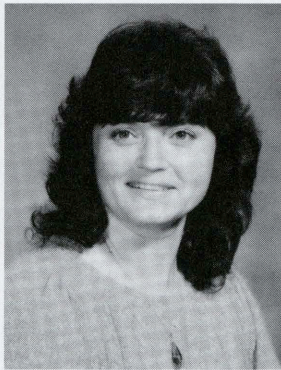
MARC R. FRY
BA, Psychology



TODD M. GAINLEY
BA, Social Welfare/Child Devel.



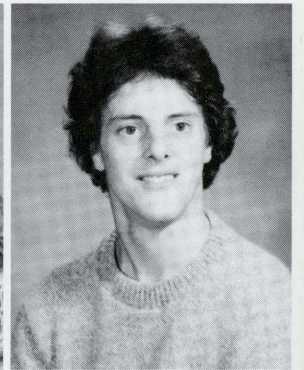
DAVID GARCIA
BS, Forestry



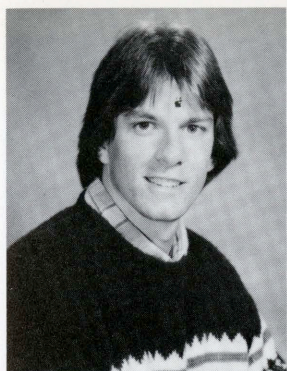
LAURA LEE GEORGE
BS, Business Administration



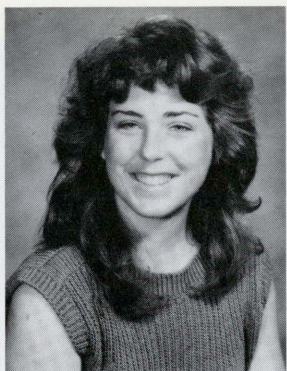
CRISTINA U. GILLESPIE
MA, Psychology



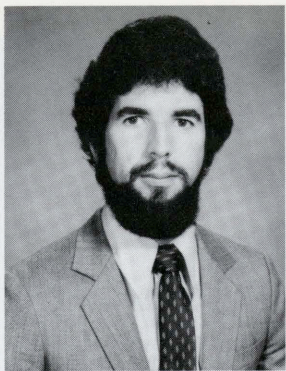
ADRIAN A. GILLIES
BA, Music



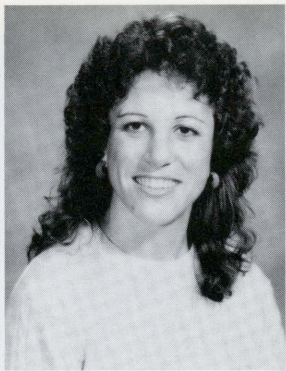
JAMES E. GLAZE
BA, Language Studies



TERRI A. GOLAN
BS, Business Administration



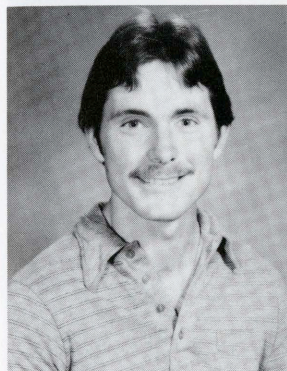
ALFONSO GONZALEZ
BS, Business Teaching



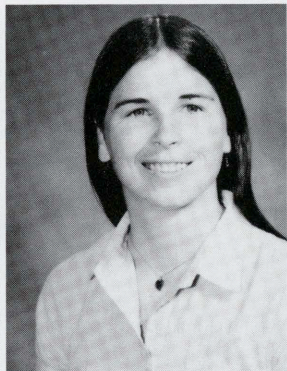
DEBORAH C. GRAY
BS, Accounting



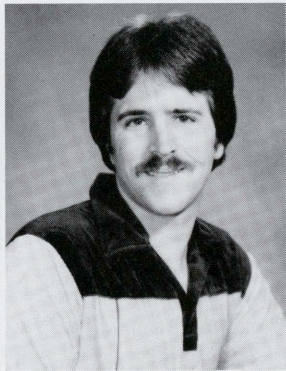
MARLENE GREENWAY
BA, Anthropology



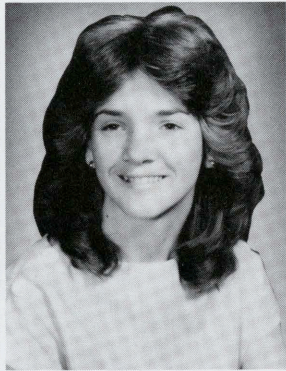
RICH W. GREGORY
BA, Zoology



MARGARET J. GUARE
BS, Geology



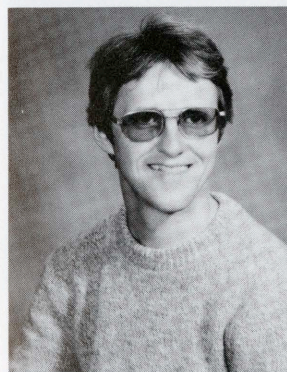
ALAN C. GUNN
BS, Geography



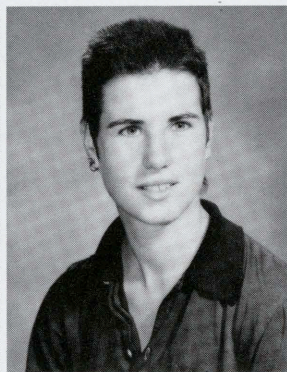
LINDA A. HAEFKE
BA, Psychology



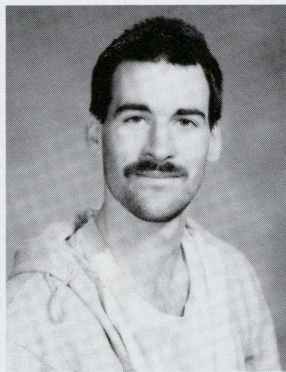
SUSAN E. HALE
BA, Liberal Studies-English



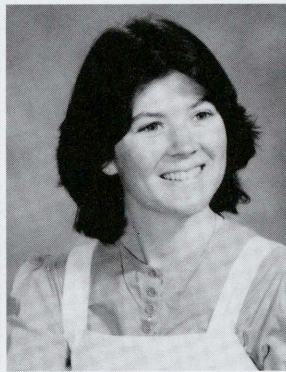
CHARLES M. HANLEY
MA, English



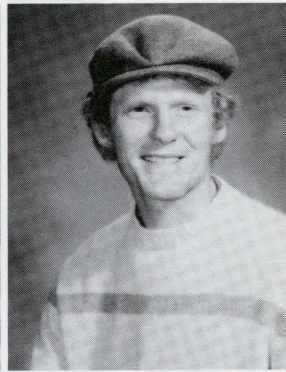
MARIBETH HANRAHAN
MA, Sculpture



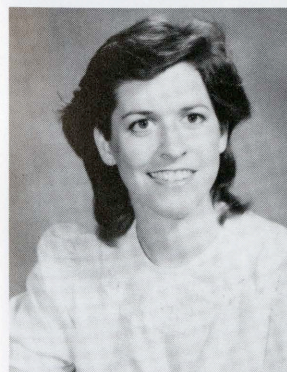
THOMAS C. HARGRAVE
BS, Liberal Studies



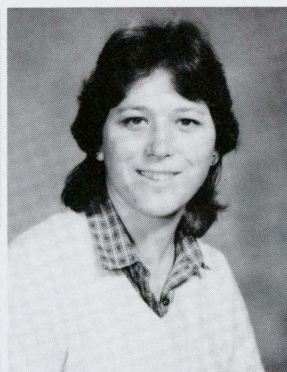
NOREEN HARNBY
BA, Liberal Studies



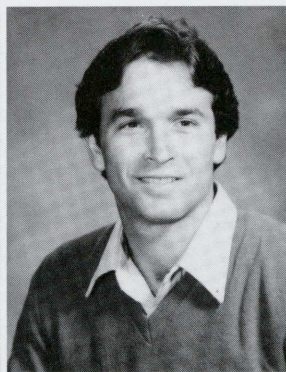
CHRISTOPHER C. HART
BA, Music



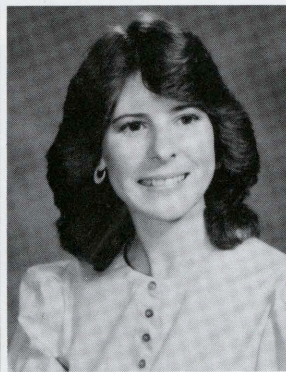
DANNA L. HARVEY
BA, Marketing



LESLIE A. HEBER
BS, Business Administration



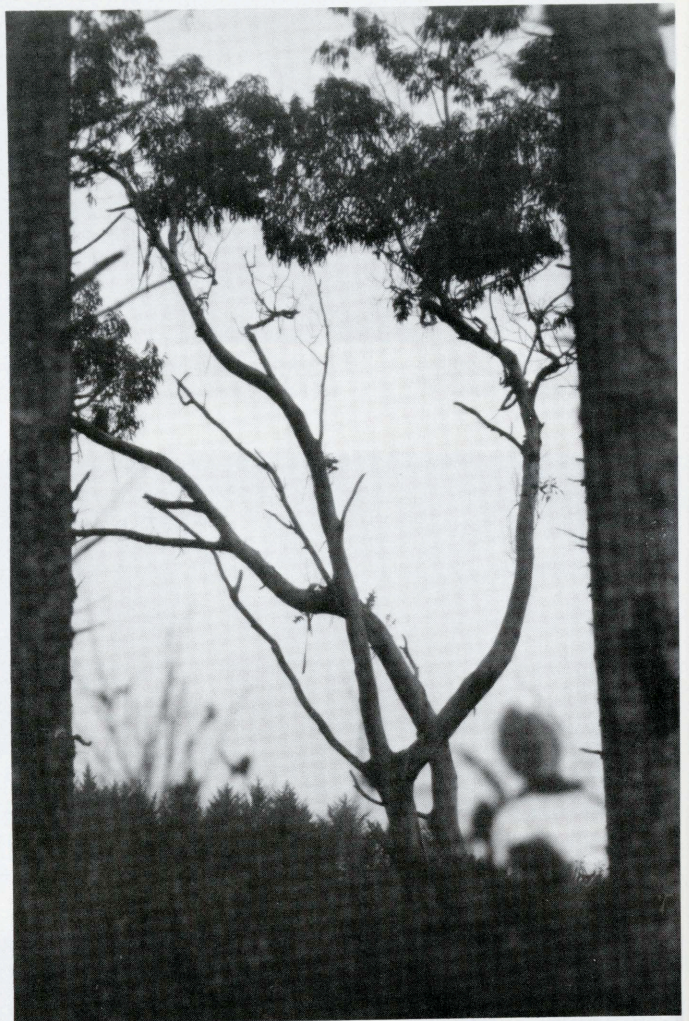
CRAIG HEBERER
BS, Fisheries



JEAN L. HENDRICKS
BA, English



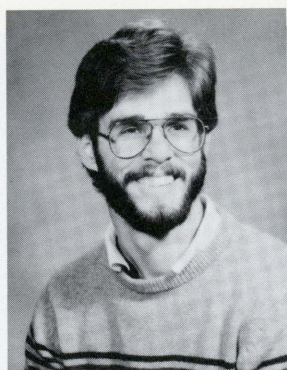
JENNIFER HINTZ
BA, German



Photos by Mark Lind



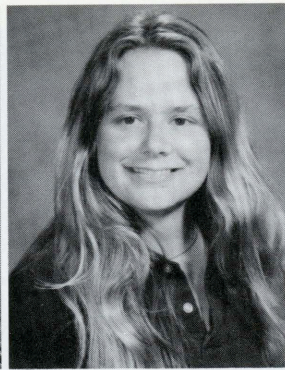




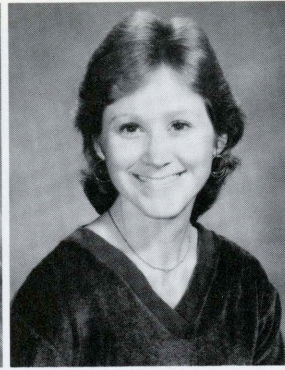
STEVEN D. HOLMES
BA, Social Sci. (Single Subj. Credit)



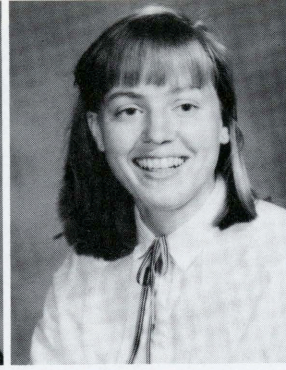
JULIE J. HOLZ
MA, Speech Pathology



CAROL L. HOUSEMAN
BA, Environmental Biology



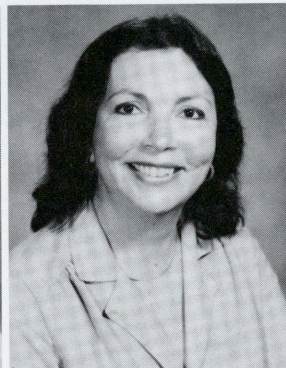
HELEN HOWELLS
BS, Wildlife Management



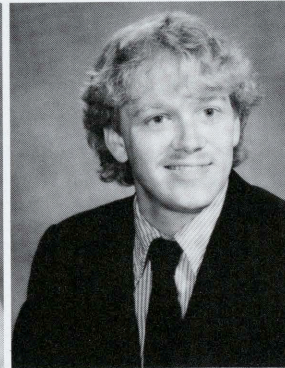
THERESA HYLAND
BA, Journalism



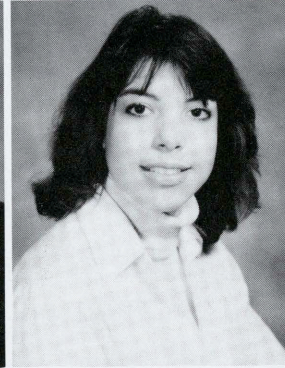
LISA A. IRVING
BS, Nat. Res. Planning & Interp.



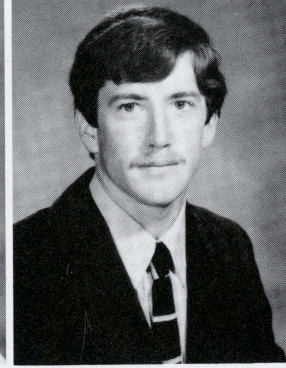
CLAUDIA D. ISRAEL
BA, Psychology



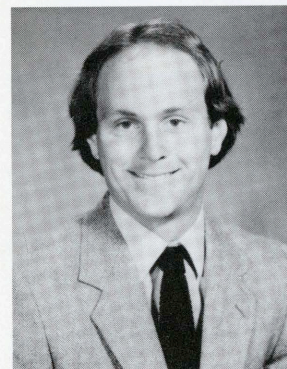
BRUCE R. JACKSON
BA, Political Science



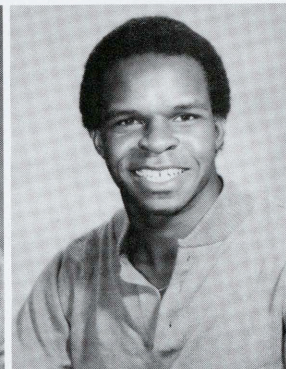
LORNA L. JARRETT
BA, History



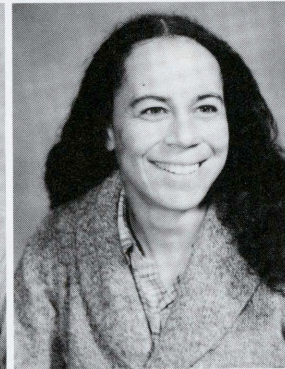
DAVID M. JOHNSON
BS, Geology



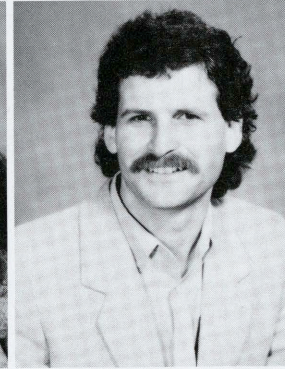
GREG JOHNSON
BS, Forestry



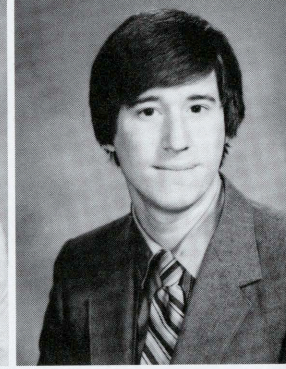
OTIS H. JOHNSON
BA, Political Science



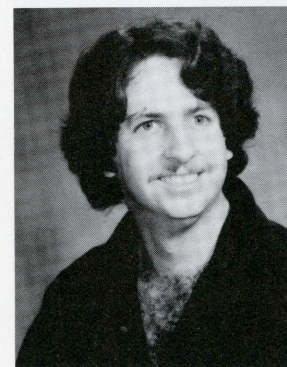
KATHERINE JOHNSTON
BA, Theatre/English



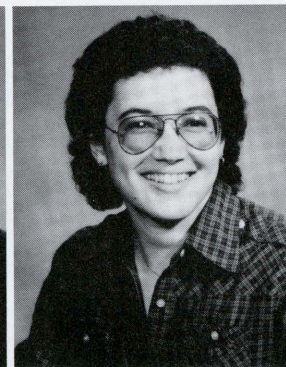
AUBREY E. JONES
BA, Biology/Botany



JEFF V. JONES
BS, Accounting



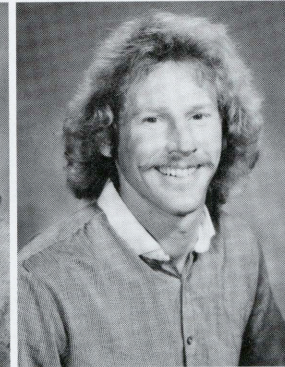
RANDY M. JONES
BA, Geology



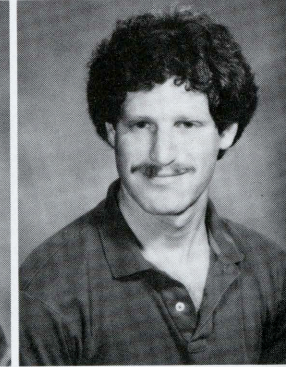
KAREN L. JORDAN
BA, History



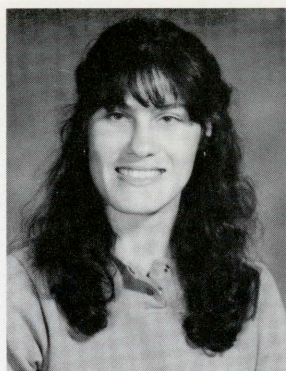
SHAWNA L. JOYCE
BS, Wildlife Management



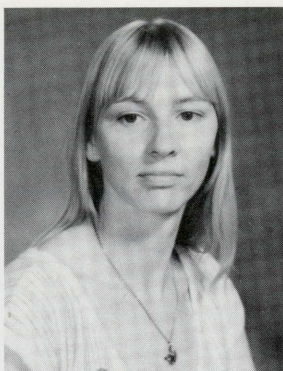
DON KAIZEN
BS, Engineering



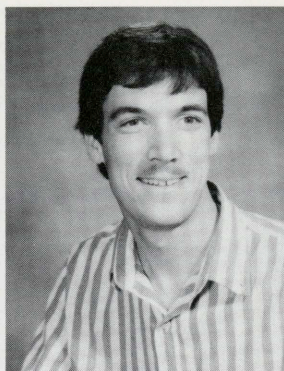
MATTHEW A. KALIN
BA, Music



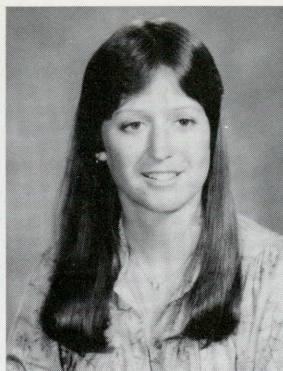
KELLY MARIE KAWSUNIAK
BA, Zoology



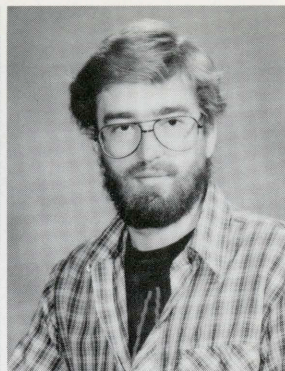
JANICE G. KING
BA, Zoology/Biology



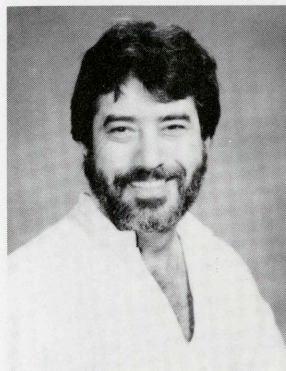
TOM A. KING
BS, Business Administration



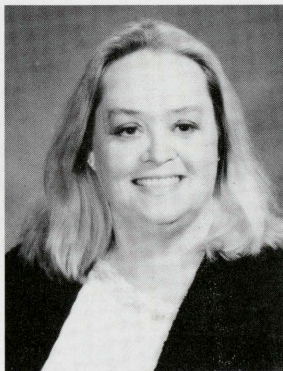
KATHERINE D. KNORR
BS, Forestry



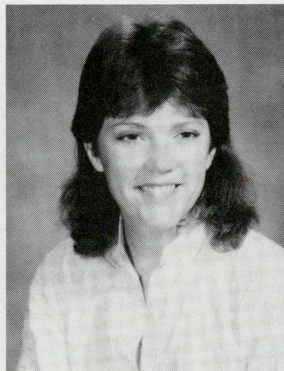
JON-ERIC L. KRONVALL
BA, Political Science/History



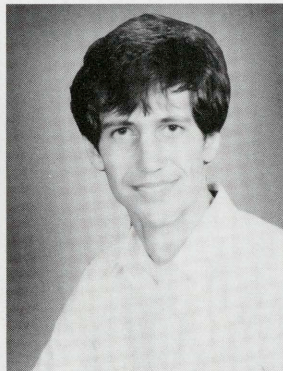
JOHN A. LA ARGO
BA, Theatre Arts



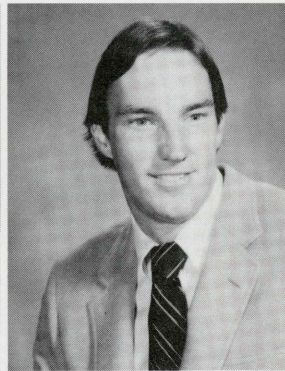
KAY LACK
BA, Journalism-Public Relations



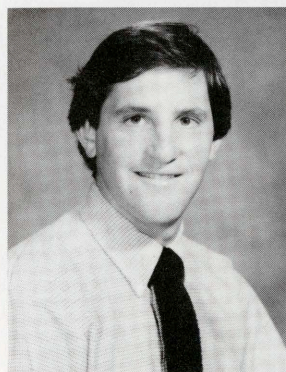
DONNA G. LaGRAFFE
BS, Nat. Res. Planning & Interp.



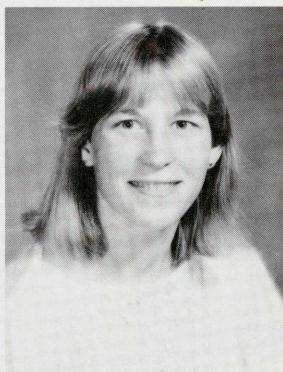
JOE LALLO
BS, Business Administration-C.I.S.



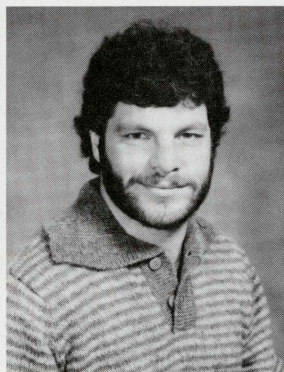
JOHN S. LANGER
BS, Business Administration



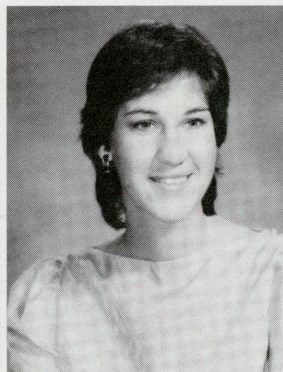
CHARLES LARWOOD
BS, Nat. Res. Planning & Interp.



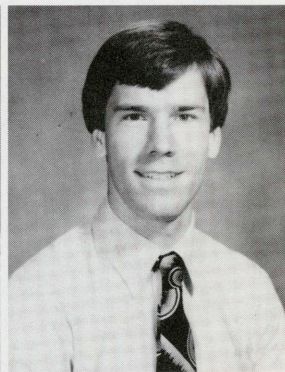
NANCY M. LASHBROOK
BS, Business Administration



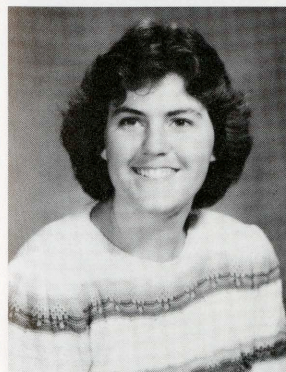
DOUG H. LAURSEN
BA, Art/Computer Science



LISA G. LAZOREK
BS, Business Administration



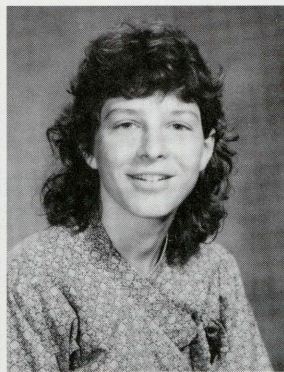
JOEL A. LEHMAN
BS, Environmental Resources Eng.



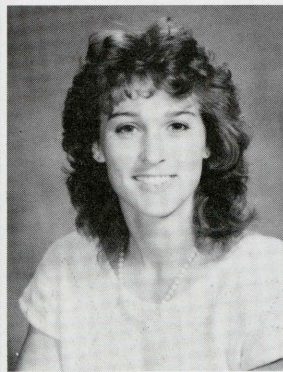
LORIE E. LESLIE
BA, Speech Comm./Child Devel.



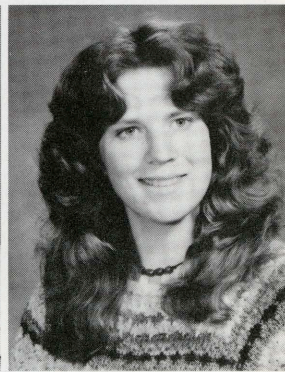
CINDY M. LEVY
BA, Zoology/Biology



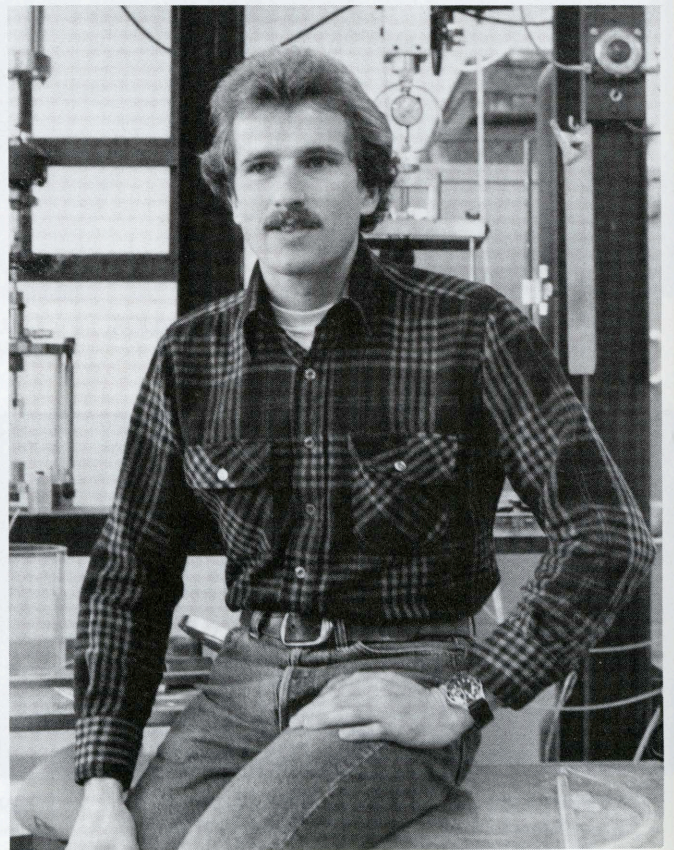
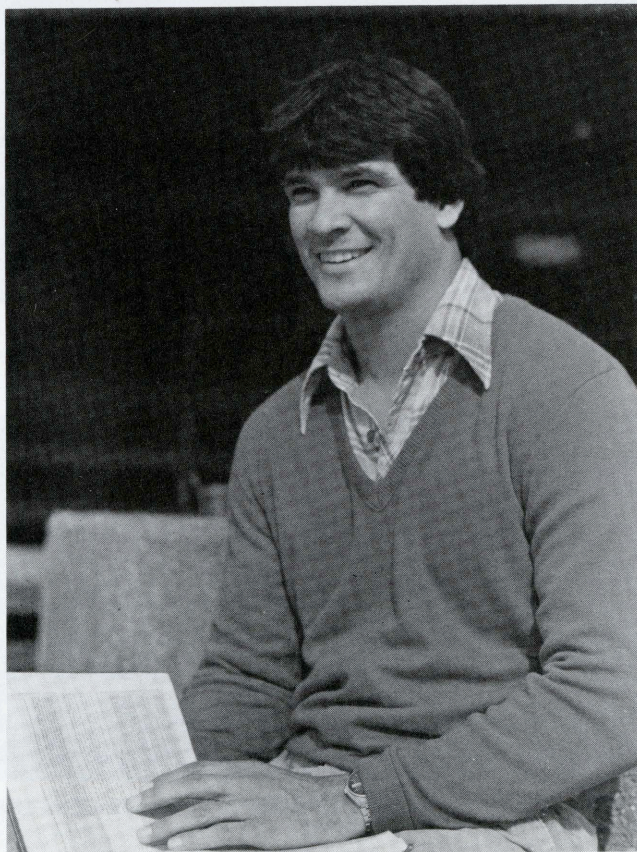
EMILY M. LEWIS
BA, History



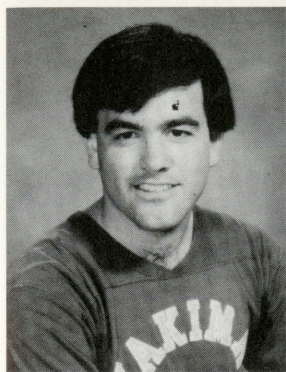
NANCY A. LIBBY
BA, Finance



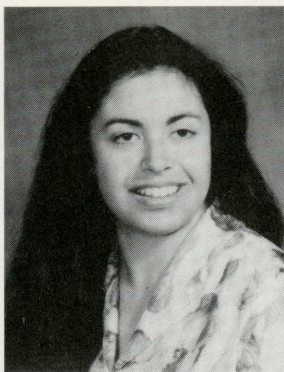
EVALINN LOHMAN



Photos by Robert Couse-Baker



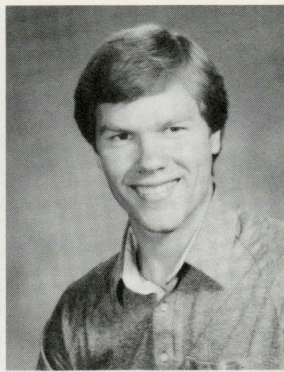
ROBERT D. MAGEE
BA, Geography



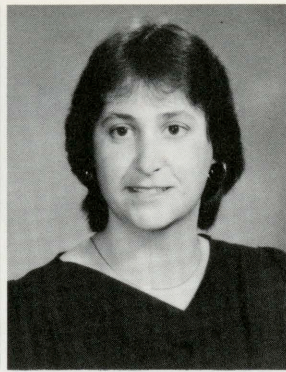
LAURA L. MANZANILLA
BA, Art



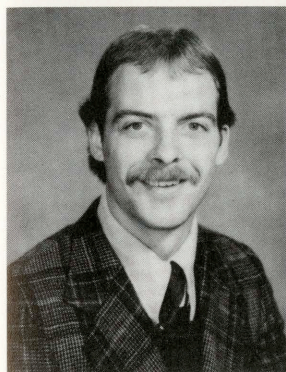
ELLEN J. MARSH
BA, Speech & Hearing



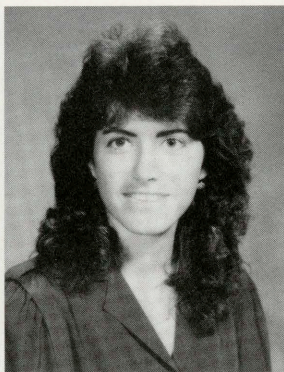
WES MARSHBURN
BA, Geology



MICHELE E.
MARTIN-NELSON
BA, Speech Pathology & Audiology



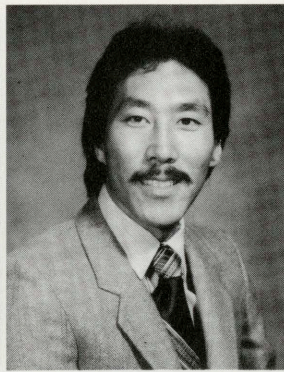
THOMAS J. MARTIN
BS, Business Administration



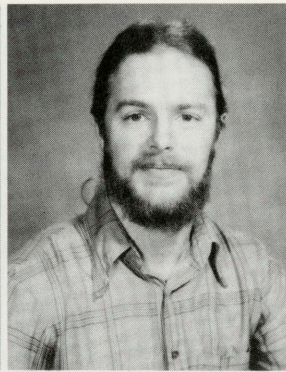
MICHELLE MAXEY
BA, Cellular & Molecular Biology



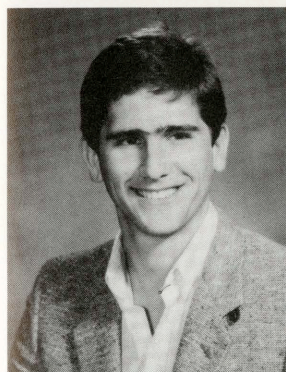
JILL M. MAYBERRY
BA, Speech & Hearing



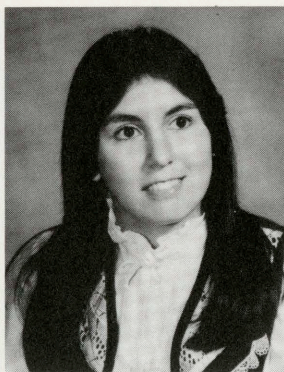
FRED M. MAYEDA
BS, Fisheries



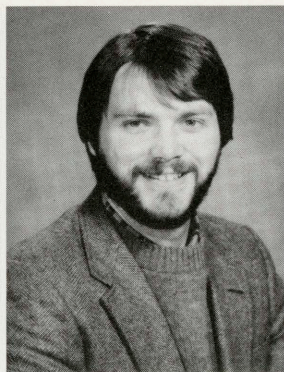
DANIEL G. MAYO
BS, Production



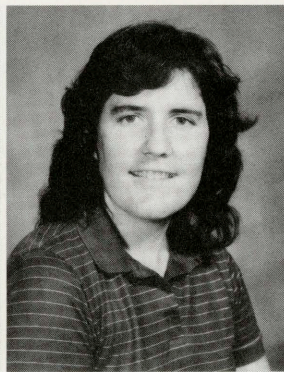
HUGH A. McCABE
BA, Public Relations



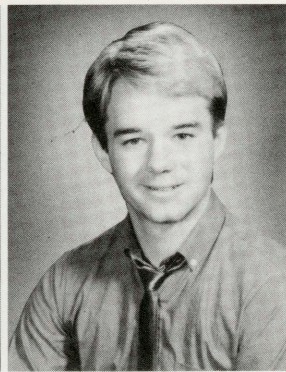
DAPHNE C. McCALLUM
BA, English



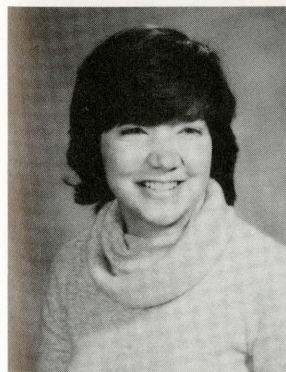
GARY L. MCINTIRE
BA, Psychology



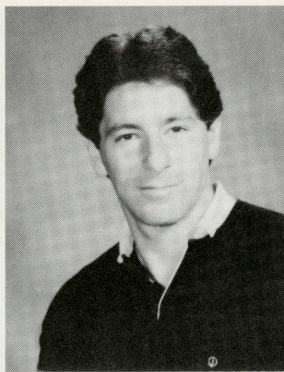
RENEE N. MENARD
BA, Geography



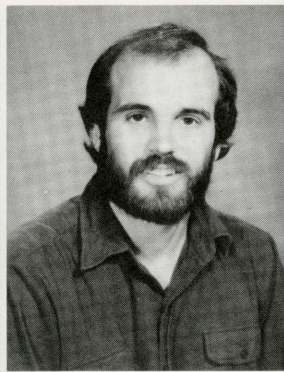
CHARLES E. METIVIER
BA



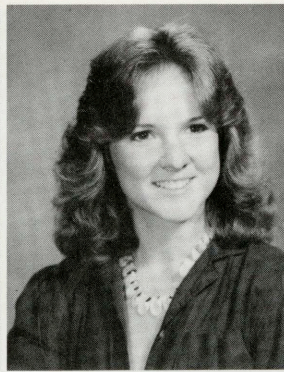
CYNTHIA A. MILLER
BS, Nat. Res. Planning & Interp.



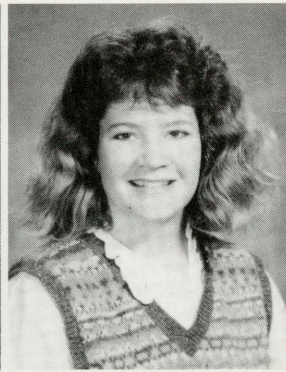
ROBERT M. MILLER
BS



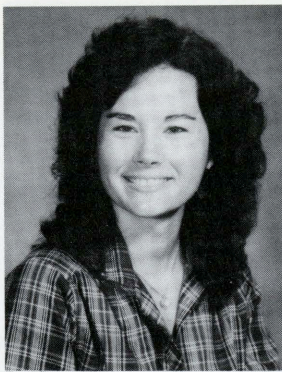
PAUL MILLIGAN
BS, Range Management



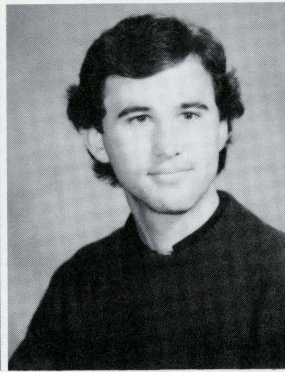
CRISSY JEANETTE MILLS
BA, Music



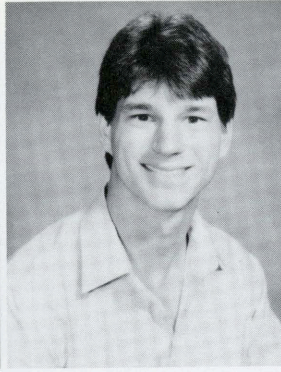
LAURA J. MINNER
BA, Child Psychology



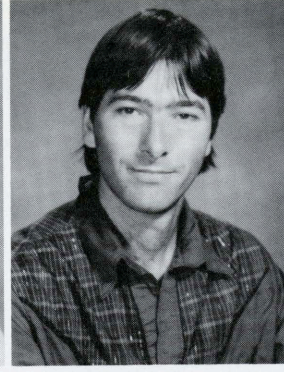
PATRICIA A. MITCHELL
BA, Psychology



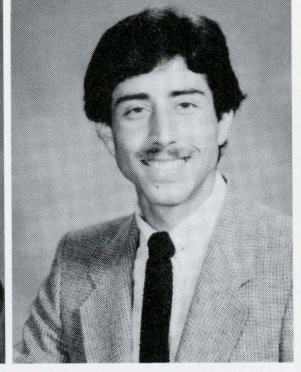
WILLIAM T. MITCHELL
MS, Natural Resources-Fisheries



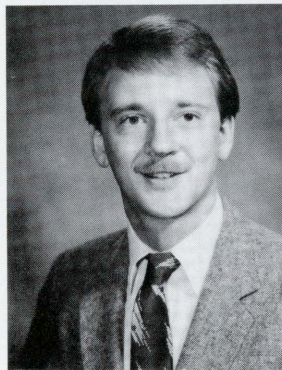
ANDREW R. MOORE
BA



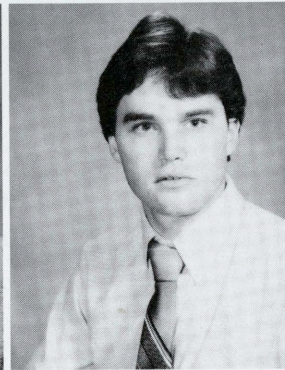
MICHAEL L. MOORE
BA, Industrial Arts



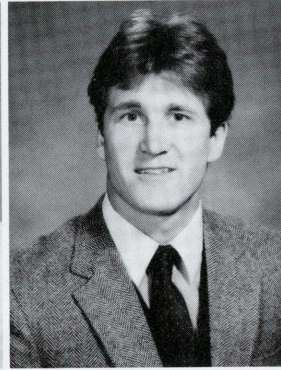
RAMON MORALES-SANCHEZ
BA, International Relations/French



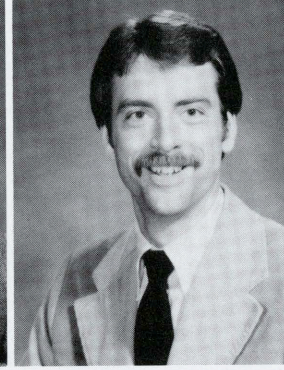
HENRY A. MULAK
BA, Journalism



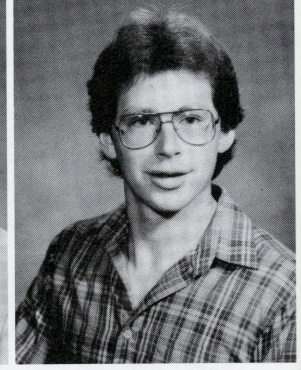
MICHAEL V. MUMFORD
BA, Geology/Mathematics



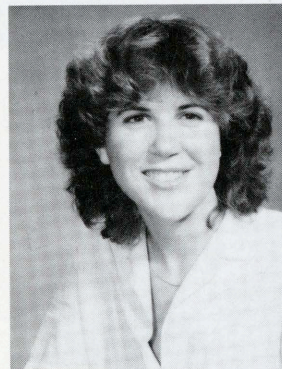
BRAD H. MUNGER
BA, Finance



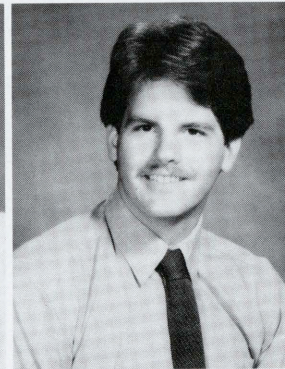
MATTHEW D. MURPHY
BS, Forestry



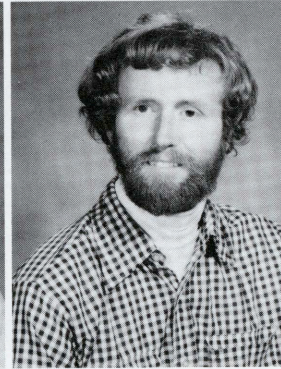
PATRICK NEWBY
BS, Fisheries



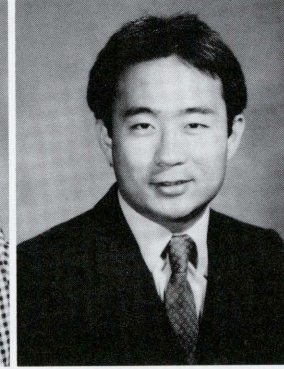
KRISTINE NILL



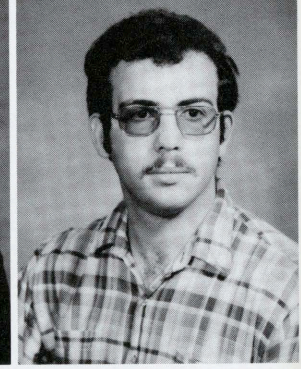
GREG NORTON



PETE J. O'CONNOR
BA, Recreation Administration



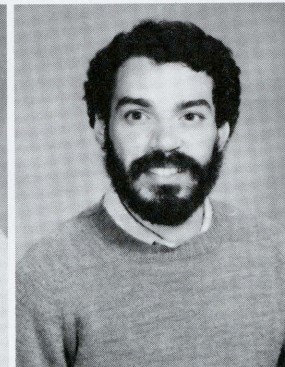
BRUCE OGATA
BA



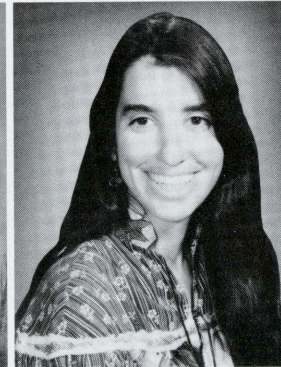
M. JEFF OHLFS
BS, Nat. Res. Planning & Interp.



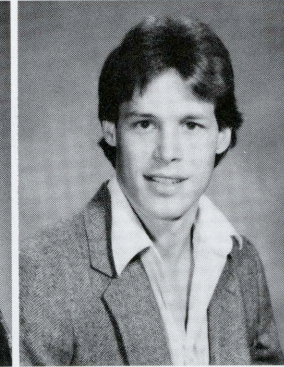
JULIE A. OLDENBURG
BS, Nat. Res. Planning & Interp.



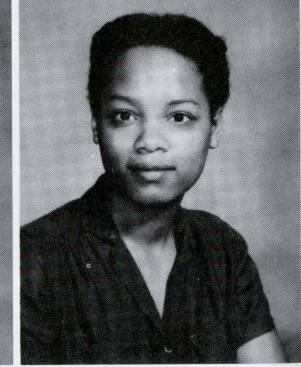
ALFREDO P. PAIVA-HERNANDEZ
BS, Engineering



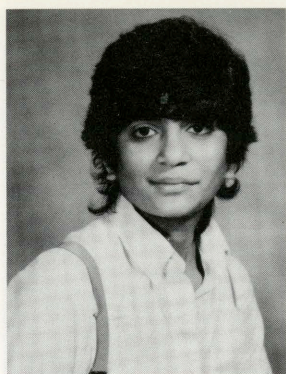
DIANE E. PARRY
BA, Geology



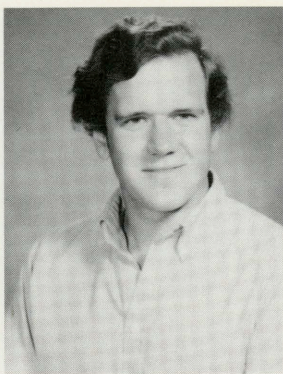
KENNETH A. PARTRIDGE
BA, Psychology



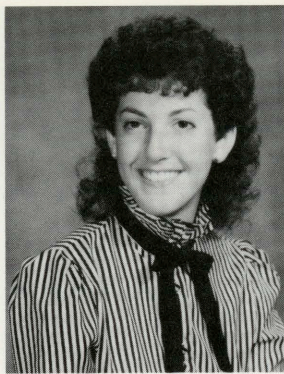
SANDRA PASCHAL
BA, Speech Pathology & Audiology



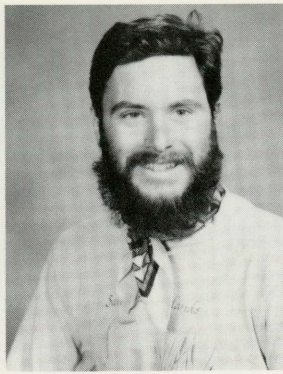
SMITA PATEL
BA



MICHAEL A. PAUKSTIS
BA, Economics



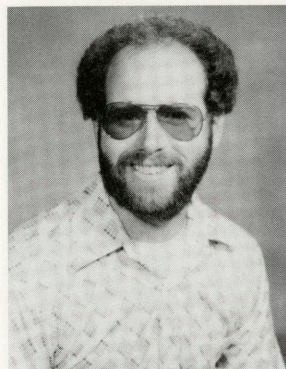
ANN-MARIE PERA
BA, Geography



GARY E. PERLESS
GA, Geography



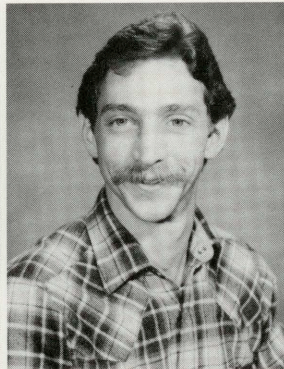
CAROL PLUMMER
BA, Home Economics



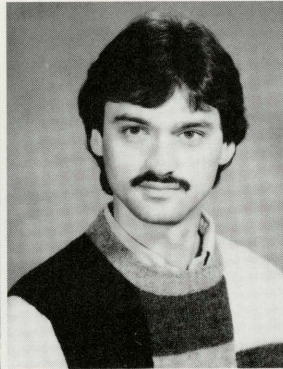
THOMAS M. PLUMMER
BS, Environmental Engineering



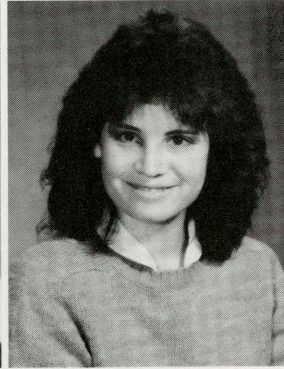
LORI A. POLA
BA, Liberal Studies



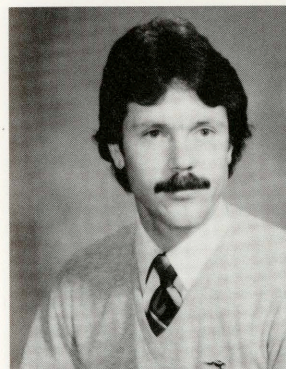
ERIC W. POLSON
BS, Environmental Resources Eng.



VALENTIN POPOV
MA, Art-Photography



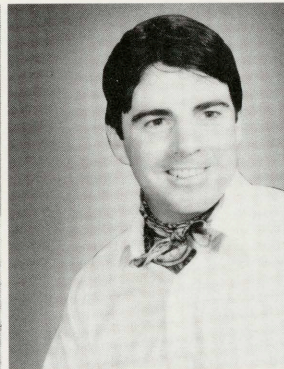
KAMELA B. PORTUGES
BS, Marketing



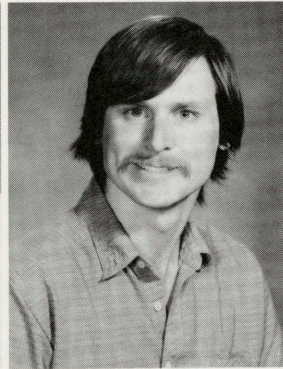
RANDOLPH B. POUSHEY
BS, Wildlife Management



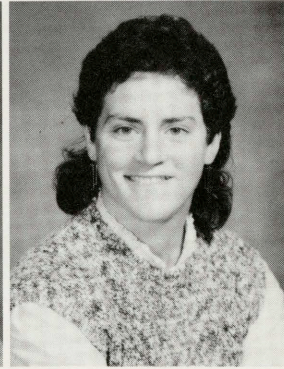
CLARA W. PRINDLE
BA, English



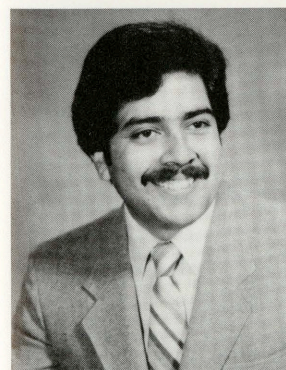
JEFFREY J. RADER
BA, Political Science



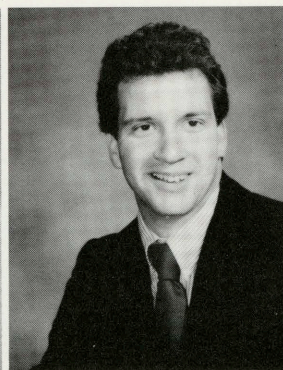
DAVID J. RECLITE
BS, Business Administration-C.I.S.



JULIE E. REICH
BA, Music



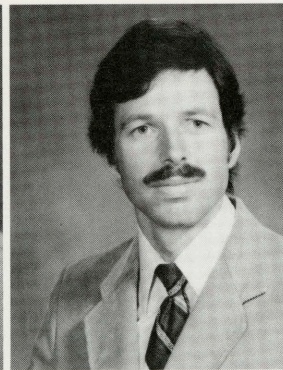
GILBERT A. RESENDEZ
BA, Psychology



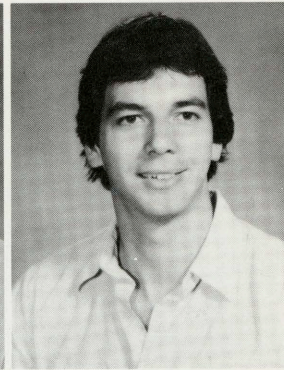
CHRISTOPHER RICHELIEU
BA, Geography



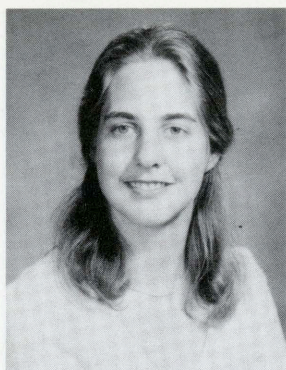
ALICIA ROBINSON
BA, Psychology



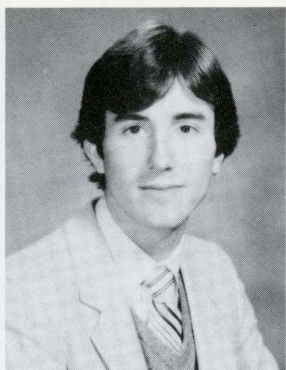
KIM C. ROBINSON
BA, Botany/Biology/Zoology



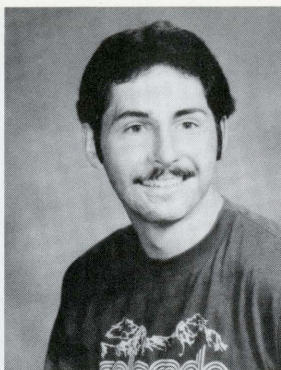
BRYAN S. ROBLES
BA, Scientific Illustration



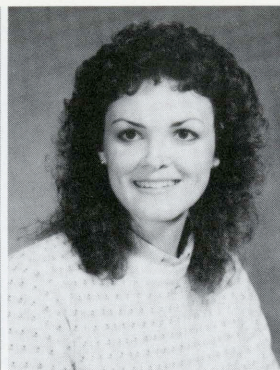
GWEN ROHLES
BA, Industrial Arts & Technology



GEORGE W. ROOS
BS, Wildlife Management



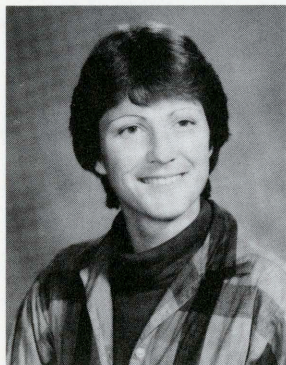
WILLIAM A. ROSEBERRY
BA, Geology



DEBORAH E. RUBNER
BA, Biology



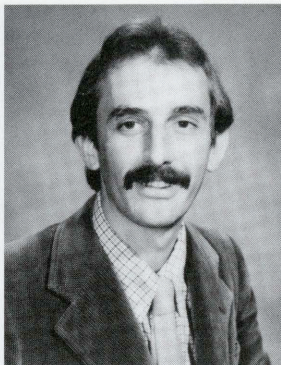
MARY E. RUGRODEN
BA, Cellular & Molecular Biology



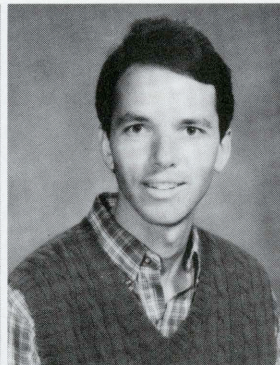
ERIN M. RYAN
BA, English



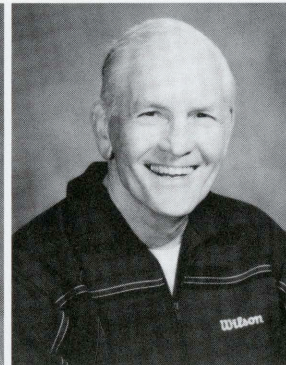
PATRICIA RYAN
BA



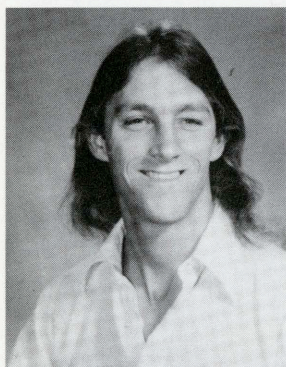
DAVID E. SALAS
BA, Biology



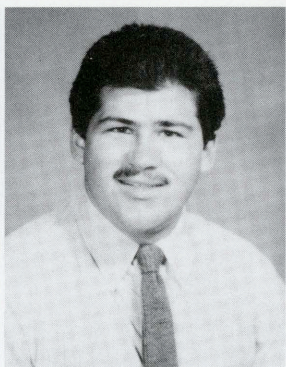
GARY L. SAWYER
BA, Psychology



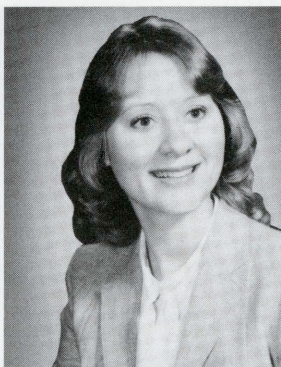
WALTER SCHAFRAN
BA, Geography



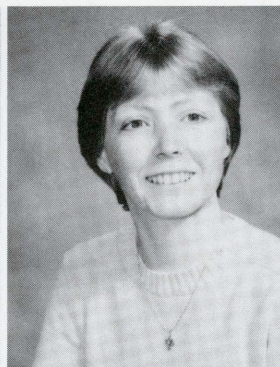
JOHN A. SCHATZ
MS, Fisheries



DAN SCHMAELING
BA, History



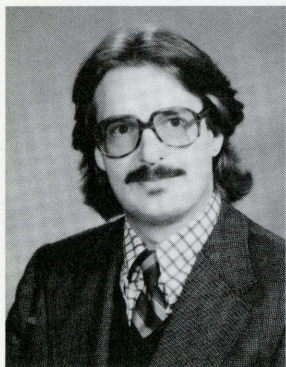
CHERI L. SCHROEDER
BA, Liberal Studies-Social Sci.



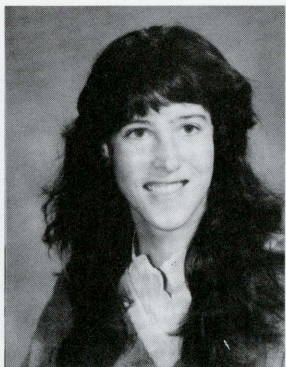
MARY L. SCOTT
BS, Nat. Res. Planning & Interp.



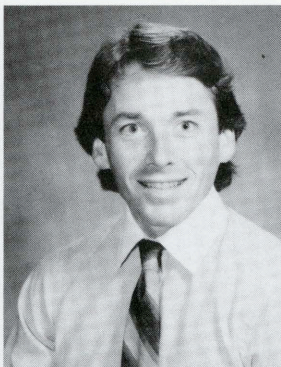
COLEEN L. SHADE
BS, Nat. Res. Planning & Interp.



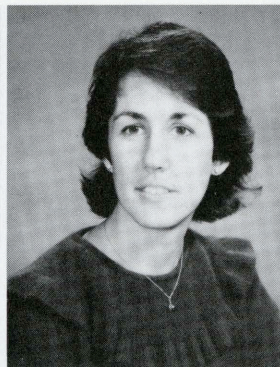
FRANK A. SHAW-BACIK
BA, Pre-Law-Social Science



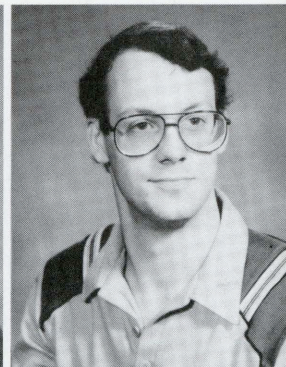
ROBIN A. SHAW-BACIK
BA, Child Development



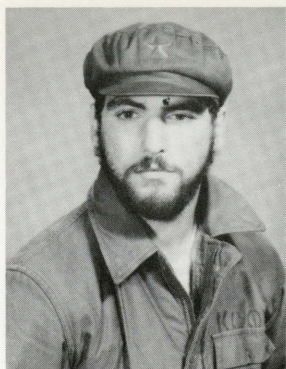
JOHN W. SHIELDS
BA, Physical Education



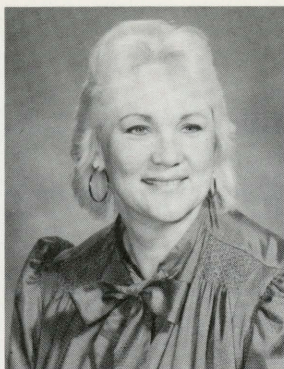
SUZANNE L. SHELTON
BS, Environmental Resources Eng.



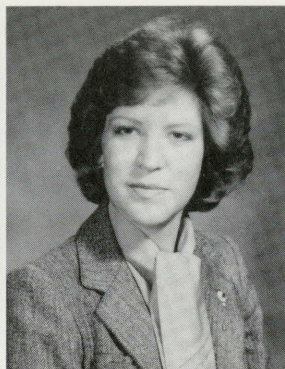
MARK A. SIGL
BA, Industrial Arts



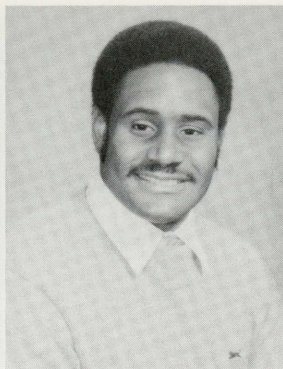
RICHARD R. SILVER
BA, Asian Culture



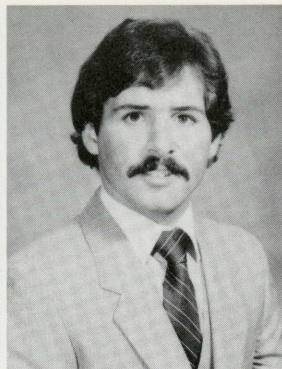
DONNA M. SLAGLE
BA, Geography



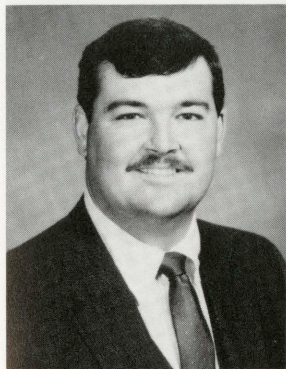
KRISTINE R.M. SMALLEY
BA, Journalism-Public Relations



ADRIAN LELAND SMEDLEY
BS, Business Administration



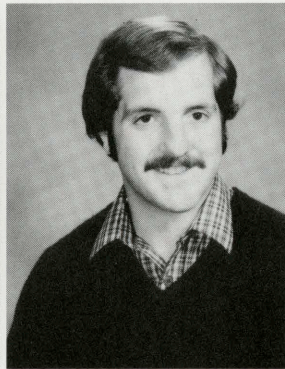
CHARLES L. SMITH
BA, Biology



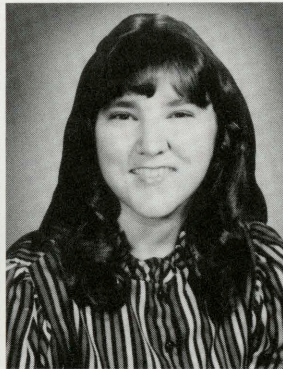
KENNETH PORT SMITH
BA, Psychology



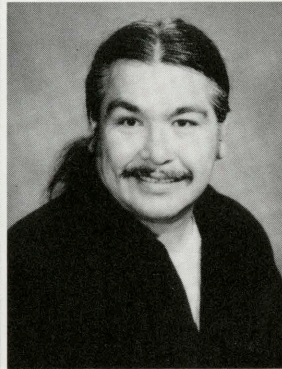
ELLA M. ST. JOHN
BA, Liberal Studies-Social Sci.



JAMES A. STEMACH
BS, Marketing



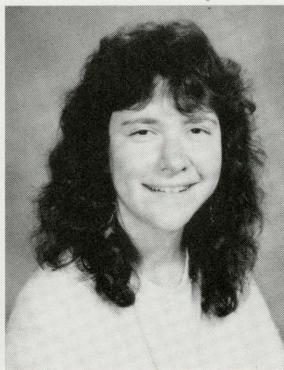
KATERINE STEWART
BA, Liberal Studies-English



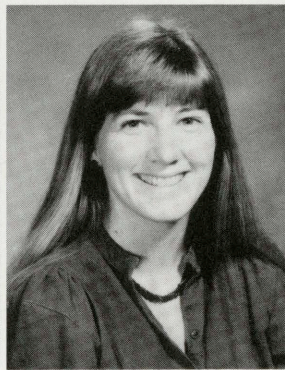
MELVIN M. STOKES
BA, Psychology



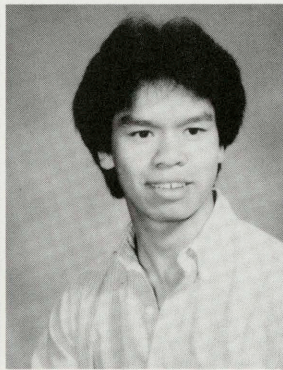
MYRTLAN W. STRAWN
BA, Art-Painting



JODI L. STUTZ
BA, English



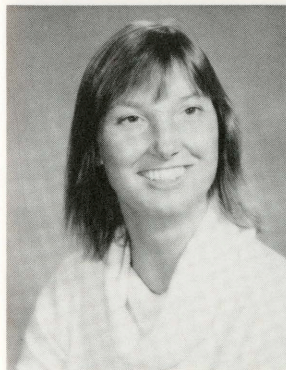
S. MARTHA STUTZ
BA/BS, Music/Speech & Hearing



THANH C. TA
BS/BA, Bus. Admin./Psychology



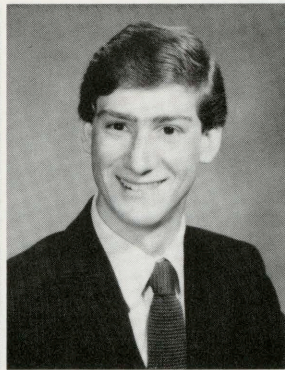
COLLEEN M. TARR
BA, Psychology/Social Welfare



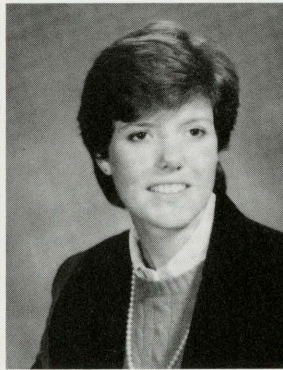
CATHERINE J. TASCHLER
BA, Recreation Administration



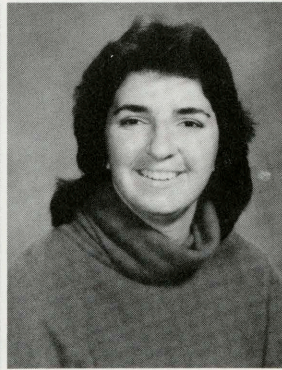
KATE J. TAYLOR
BA, Sociology



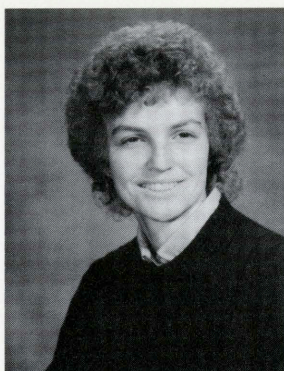
STEVEN W. TAYLOR
BA, Geography



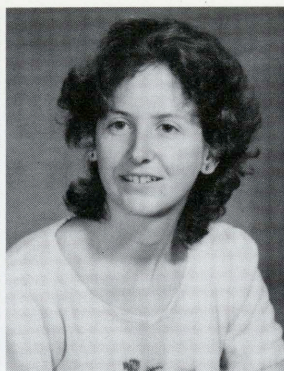
TERI D. TEGLOVIC
BA, Public Relations



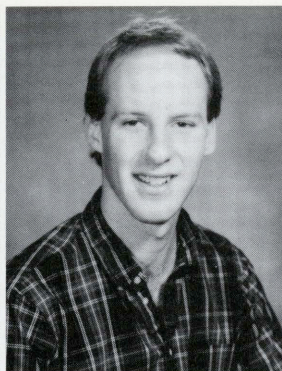
PATRICIA A. THACKERAY
BS, Forest Resources Management



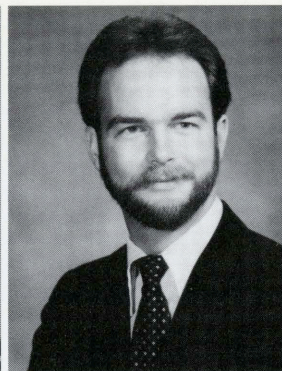
STORME M. TINER
BA, Physical Education



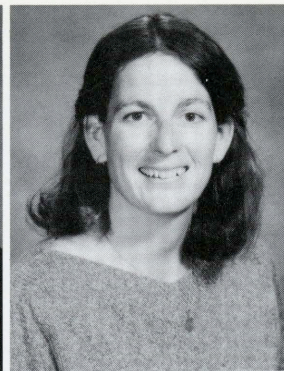
JOANNE H. TRASK
BA, Chemistry



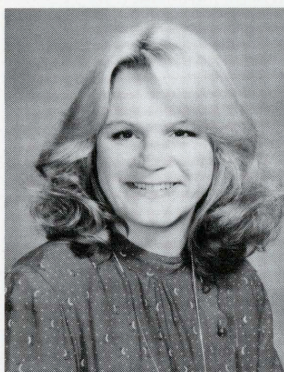
ADAM TRUITT
BA, Journalism



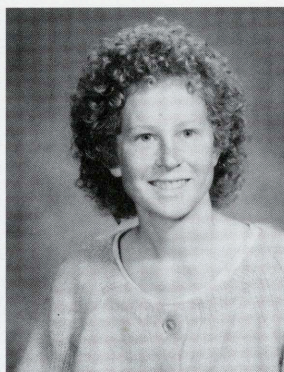
JEFFREY S. TUNNELL
BS, Forestry



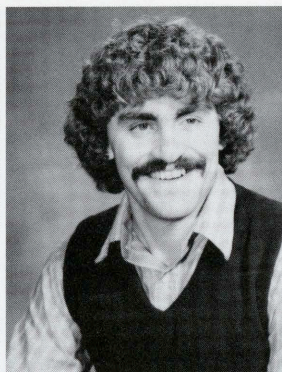
TARA MARIE TWOMEY
BA, Biology/Zoology



ROBIN L. TYLER
BS, Marketing



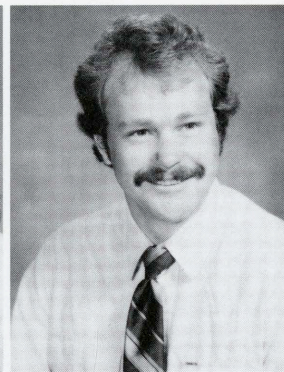
CORY L. VAN GELDER
BA, Art



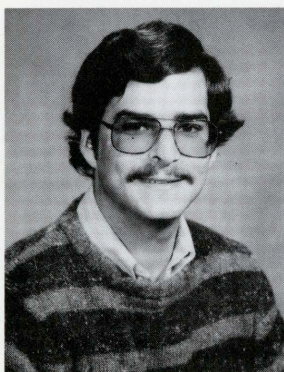
ROLLAND A. VANDER SLUIS
BA, Geography



VICTORIA VANDERVELDT
BS, Accounting



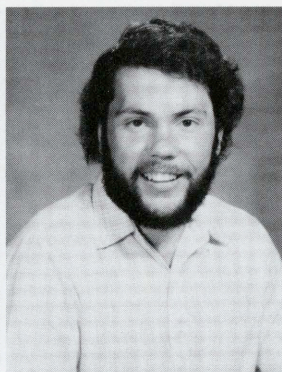
TIMOTHY P. VERBOON
BA, Geology & Earth Sciences



RANDY L. VILLA
BA, Geography



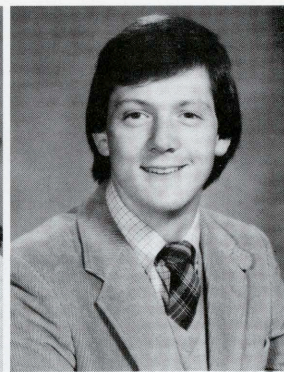
CONSTANCE S. VOLZKE
BS, Finance



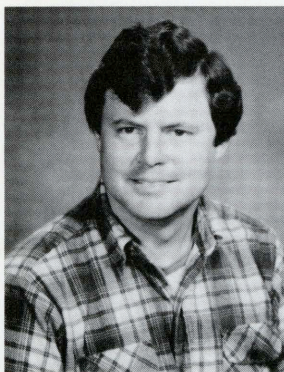
AL VONER
MA, Environmental Education



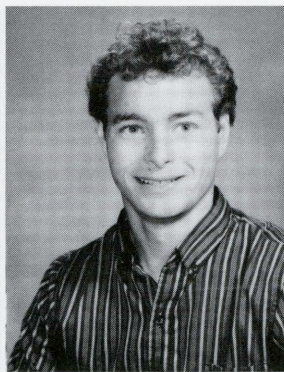
LORRIE L. WALDORF
BA, Psychology



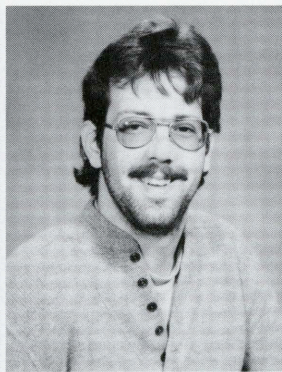
JAMES B. WALKER
BA, Business Administration



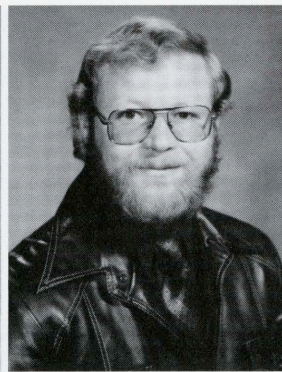
KENNETH A. WALL
MA, Physical Education



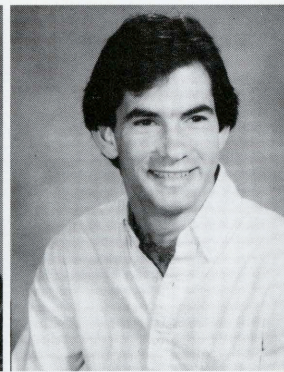
BRUCE WARD
BS, Business Administration



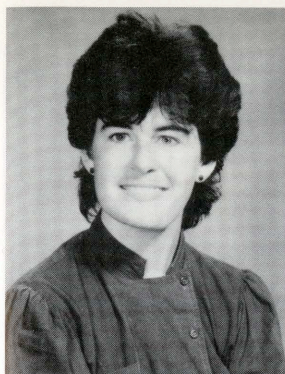
WALLY WATHEN
BS, Industrial Arts & Technology



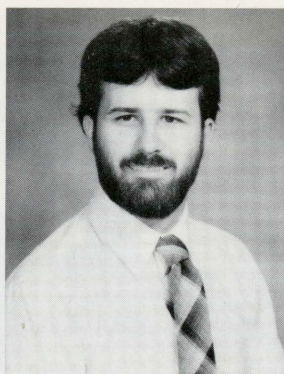
TOM WATSON
BA, Physical Geography



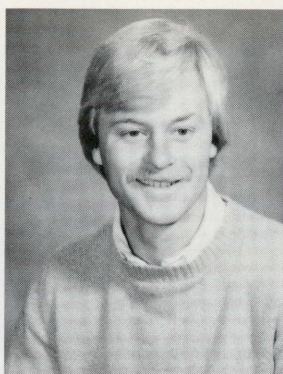
ROBERT A. WEIL
BA, Industrial Arts



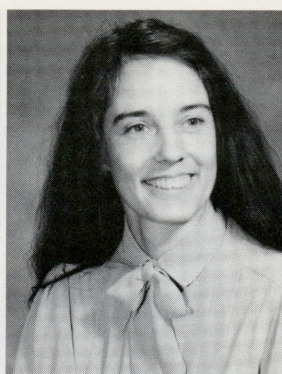
CATHY WEISS
BA, Chemistry



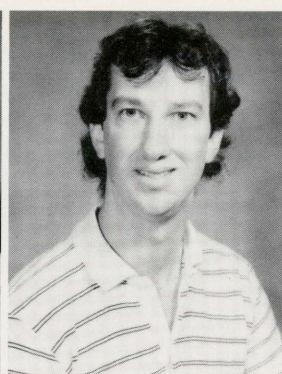
MARTIN WESTBROOK
BA, Psychology & Counseling



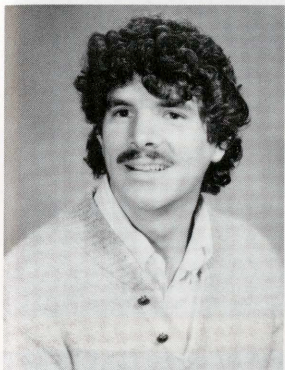
MARK E. WHEETLEY
BS/BA, R.P.I./Geography



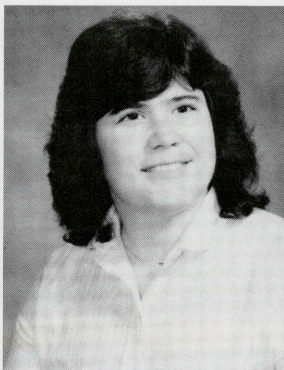
CLAUDIA WIDNER
BA, Geography



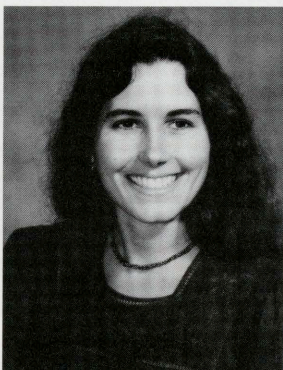
ROBERT M. WIENKE
BS, Environmental Resources Eng.



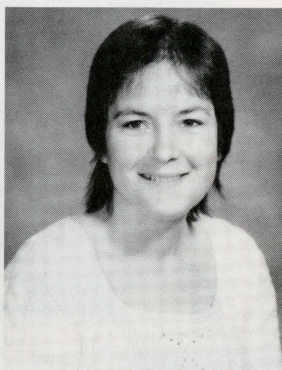
STEVEN C. WILLIAMS
BA, Biology



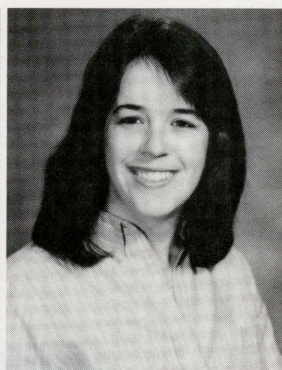
CHERYL L. WILSON
BA, Art



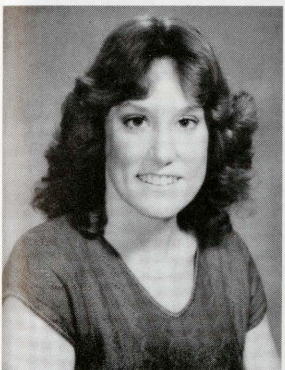
GINA L. WILSON
BA, Social Work/Child Devel.



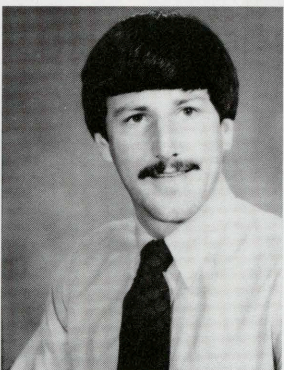
SUSAN S. WOOLEY
BA, Psychology



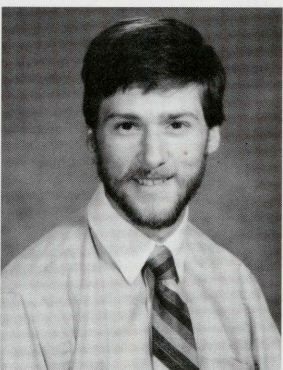
ROSEMARY L. WURST
BA, Journalism



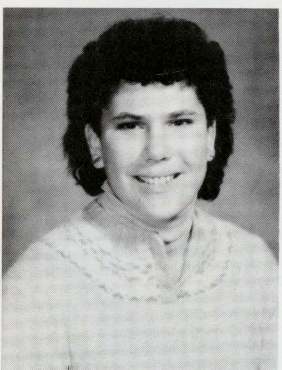
KAREN J. WYATT
BS, Forest Resources Management



MAX YAGER
BA, Environmental Biology



STEVE P. YOCUM
BA/BS

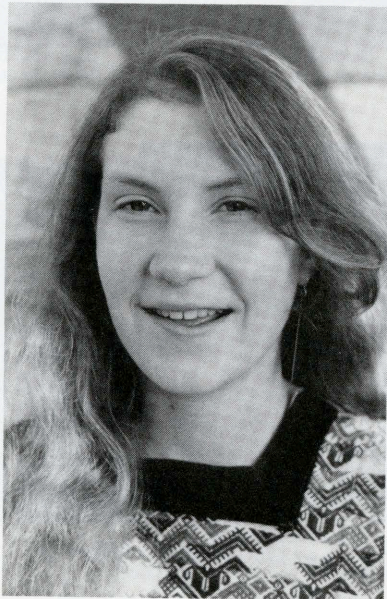


ELLA ZEILINGER
BA, Multiple Subj.-Teaching Cred.

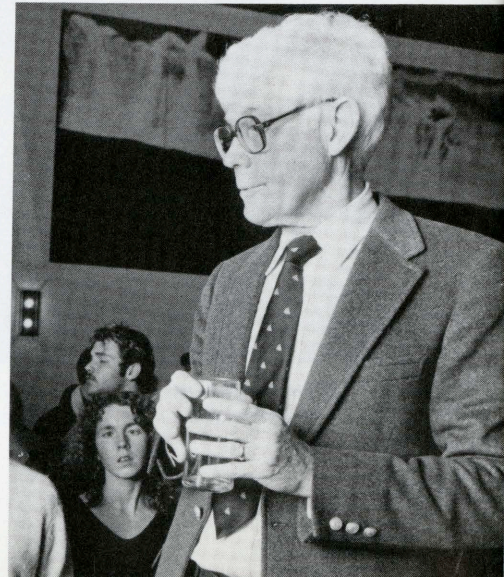
DELMA STUDIOS, San Francisco, CA
Senior Photography & Publishing



Robert Couse-Baker



Robert Couse-Baker



Delma Studios INC